

END OF FIRST TERM EXAMINATION

December

ENGLISH  
LANGUAGE 2 & 1

Essay and Objective

2 hours

2&1

Name: .....

Index Number: .....

## ONE VISION EXAMINATIONS CENTRE (OVEC)

### END OF FIRST TERM EXAMINATION

December

ENGLISH LANGUAGE 2 & 1

2 hours

Essay and Objective

**BASIC 8**

Do **not** open this booklet until you are told to do so. While you are waiting, read and observe the following instructions carefully. Write your **name** and **index number** in **ink** in the spaces provided above.

This booklet consists of **two** parts. Answer Paper 2 which comes first in your answer booklet and Paper 1 on the Objective Test answer sheet. Paper 2 will last **1** hour **10** minutes after which answer booklet will be collected. Do **not** start Paper 1 until you are told to do so. Paper 1 will last **50** minutes.

**PAPER 2**

1 hour 10 minutes

**Essay**

*This paper consists of **three** parts: **A**, **B** and **C**. Answer **three** questions in **all**; **one** question from Part **A** and all the questions in Part **B** and **C**. Answer all questions in your answer booklet.*

*Credit will be given for clarity of expression and orderly presentation of materials.*

**PART A**

**WRITING**

**[30 marks]**

*Answer **one** question **only** from this part.*

*Your composition should be about **250** words long.*

1. The joyous vacation holidays you had planned turned out to be a time of mourning. Give an account of what happened.
2. Excessive noise in our cities has become unbearable in the country. Compose paragraphs on the causes, effects and solutions to the noise pollution.
3. Write a story to explain the saying, "Every cloud has a silver lining."

**PART B**

**READING**

**[20 marks]**

4. *Read the following passage carefully and answer **all** the questions which follow.*

Every ten years, Ghana conducts a population census to count all the people living in the country. This exercise is organized by the Ghana Statistical Service (GSS). The main purpose of the census is to collect accurate information about the number of people, their age, gender, occupation and where they live. This information helps the government plan for schools, hospitals, roads, and other social services.

During the census, trained officers called enumerators visit every house to ask questions and record answers on special forms or electronic devices. The information they collect remains confidential, meaning it is not shared with anyone else. Everyone living in Ghana, including foreigners who have stayed in the country more than six months, is counted.

The data gathered from the census helps the government know how the population is growing and changing. For example, if a town's population has increased, more schools and hospitals may be built there. The census also helps with planning elections, creating new districts, and ensuring fair distribution of national resources.

However, the exercise is not without setbacks. Some people refuse to take part because of fear, misunderstanding, or lack of trust. Others may live in remote areas that are hard to reach, making it difficult for enumerators to count them. To solve this, the government carries out public education and encourages citizens to cooperate fully with census officers.

The population census is more than just counting people. It provides valuable insight that guides the nation's growth and development. With reliable information from the census, Ghana can plan effectively for the present and the future.

- (a) (i) According to the passage, what **population census**?
- (ii) Who organizes the **population census** in Ghana?
- (b) What is the main objective of the **census**?
- (c) (i) Why is the information collected **kept confidential**?
- (ii) Mention two **challenges** faced during the census.
- (d) How does the government **encourage** people to take part?
- (f) Explain in your own words, **the** following expressions as used in the passage:
- (i) *without setbacks*;
- (ii) *hard to reach*;
- (g) For **each** of the following words, give another word or a phrase that means **the same** and can fit into the passage:
- (i) **conducts**;
- (ii) **accurate**;
- (iii) **confidential**;
- (iv) **cooperate**
- (v) **reliable**
- (h) In **one** sentence, not more than **ten** words, write why the population census is more than just counting people.

**PART C**  
LITERATURE  
[10 marks]

Answer **all** the questions in this part.

THE BEACON OF LIGHT

5. Read the following extract carefully and answer the Questions **5(a)** - **5(c)**.

**THE FOREST GOLD**

"The water itself seemed to have turned against its inhabitants, transformed from life-giving force to deadly poison." (page 174)

- (a) What had happened to the former inhabitants of the river?
- (b) What figure of speech is in the above extract?
- (c) What had been the cause of this issue?

Read the extract below carefully and answer Questions **5(d)** and **5(e)**

"The once-slumbering village of Daakye Asem transformed overnight into a bustling hub of activity. The forest, once a tranquil haven, became a magnet for opportunists" (page 170)

- (d) Who were the opportunists described in the extract?
- (e) What literary device is in the expression, "the forest, once a tranquil haven, became a magnet for opportunists"?

**DAWUNI'S DREAM**

Read the extract below carefully and answer Questions **5(f)** to **5(h)**

Anfani : The time has come to call upon the ancestors for help. Let us begin the ritual.  
Alheri : Oh, ancestors, hear our plea! Bring us rain, bring us life!  
Dawuni : We promise to honour the land, to protect and serve our people!  
(page 120)

- (f) Why were they crying for rain?
- (g) What ritual could be performed to bring back the rain?
- (h) "Oh, ancestors, hear our plea," is an example .....

Read the extract below carefully and answer Questions **5(i)** and **5(j)**

"Your majesty, a severe drought has struck our land. Our crops are dying, and our people are suffering."

- (i) Who said the above extract?
- (j) What is the role of the speaker in the extract?

# DO NOT TURN OVER THIS PAGE UNTIL YOU ARE TOLD TO DO SO.

**YOU WILL BE PENALIZED SEVERELY IF YOU ARE  
FOUND LOOKING AT THE NEXT PAGE BEFORE  
YOU ARE TOLD TO DO SO.**

## BASIC 8

PAPER 1

50 minutes

### OBJECTIVE TEST

*Answer all questions on your Objective Test answer sheet.*

1. Use **2B** pencil throughout.
2. On the pre-printed answer sheet, check that the following details are **correctly** printed: Your **surname** followed by **other names**, the *Subject Name*, your *Index Number*, *Centre Number* and the *Paper Code*.
3. In the boxes marked *Candidate Number*, *Centre Number* and *Paper Code*, **reshade** each of the shaded spaces.
4. An example is given below. This is for a female candidate whose name is Janet OWUSU, Her *Index Number* is **772384188** and she is writing the examination at Centre Number **77234**. She is offering **English Language 1** and the Paper Code is **0011**.

ONE VISION EXAMINATIONS CENTRE (OVEC)

BASIC EDUCATION TERMINAL EDUCATION

### OBJECTIVE ANSWER SHEET

<b>CANDIDATE NAME:</b> OWUSU JANET	<b>SUBJECT NAME:</b> ENGLISH LANGUAGE 1
---------------------------------------	--

1. Use 2B pencil. Press firmly.	first mark completely.
2. Answer question by choosing one letter and then, shade through the letter chosen like this [A] [B] [C] [D] [E]	4. If only four alternatives answers are given for each question, ignore the letter E
3. If you want to change an answer, rub out your	5. Your question paper may have fewer than 100 questions.

CANDIDATE NUMBER									
7	7	2	3	8	4	1	8	8	
[0]	[0]	[0]	[0]	[0]	[0]	[0]	[0]	[0]	[0]
[1]	[1]	[1]	[1]	[1]	[1]	[1]	[1]	[1]	[1]
[2]	[2]	[2]	[2]	[2]	[2]	[2]	[2]	[2]	[2]
[3]	[3]	[3]	[3]	[3]	[3]	[3]	[3]	[3]	[3]
[4]	[4]	[4]	[4]	[4]	[4]	[4]	[4]	[4]	[4]
[5]	[5]	[5]	[5]	[5]	[5]	[5]	[5]	[5]	[5]
[6]	[6]	[6]	[6]	[6]	[6]	[6]	[6]	[6]	[6]
[7]	[7]	[7]	[7]	[7]	[7]	[7]	[7]	[7]	[7]
[8]	[8]	[8]	[8]	[8]	[8]	[8]	[8]	[8]	[8]
[9]	[9]	[9]	[9]	[9]	[9]	[9]	[9]	[9]	[9]

CENTRE NUMBER				
7	7	2	3	4
[0]	[0]	[0]	[0]	[0]
[1]	[1]	[1]	[1]	[1]
[2]	[2]	[2]	[2]	[2]
[3]	[3]	[3]	[3]	[3]
[4]	[4]	[4]	[4]	[4]
[5]	[5]	[5]	[5]	[5]
[6]	[6]	[6]	[6]	[6]
[7]	[7]	[7]	[7]	[7]
[8]	[8]	[8]	[8]	[8]
[9]	[9]	[9]	[9]	[9]

PAPER CODE			
0	0	1	1
[0]	[0]	[0]	[0]
[1]	[1]	[1]	[1]
[2]	[2]	[2]	[2]
[3]	[3]	[3]	[3]
[4]	[4]	[4]	[4]
[5]	[5]	[5]	[5]
[6]	[6]	[6]	[6]
[7]	[7]	[7]	[7]
[8]	[8]	[8]	[8]
[9]	[9]	[9]	[9]

For Supervisors only.

If candidate is absent shade this space.



Answer **all** questions in this section.

Each question is followed by **four** options lettered A to D. Find the **correct** option for **each** question and shade **in pencil** on your answer sheet the answer space which bears the same letter as the option you have chosen. Give only **one** answer to **each** question. An example is given below

From the options **A** to **D**, choose the one which **most suitably completes** the following sentence.

It is still dark and therefore ..... to go out home.

- A. safe
- B. safely
- C. safety
- D. save

The correct answer is 'safe' which is lettered **A** and therefore answer space **A** would be shaded.

[ A ]                      [ B ]                      [ C ]                      [ D ]

Think carefully before you shade the answer spaces: erase completely **any** answer you wish to change.

Do all rough work on this question paper. Now answer the following questions

**PART A**  
**LEXIS AND STRUCTURE**  
**SECTION A**

From the alternative lettered **A** to **D**, choose the one **which most suitably completes** each sentence.

1. We had discussions with two different ..... today.
  - A. editors-in-chief
  - B. editor-in-chiefs
  - C. editor-in-chief
  - D. editors-in-chiefs
2. The lady ..... scream caused the mob action has left.
  - A. who
  - B. whom
  - C. whose
  - D. that
3. That ..... is a native of this village.
  - A. honest, tall, young man
  - B. young, honest, tall man
  - C. tall, honest, young man
  - D. honest, young, tall man
4. The player ..... the pitch for the first time tomorrow.
  - A. see
  - B. seen
  - C. have seen
  - D. sees
5. He is now ..... and receiving medical attention.
  - A. better
  - B. well
  - C. healthiest
  - D. worst
6. None of the learners reported early today .....
  - A. were they?
  - B. didn't they?
  - C. weren't they?
  - D. did they?
7. The principal ..... left recently was my neighbour.
  - A. whom
  - B. who
  - C. which
  - D. this
8. Listowel has been a good friend of Abdul and .....
  - A. her
  - B. me
  - C. she
  - D. him
9. You never ..... to me about your sick parent.
  - A. open out
  - B. open of
  - C. open off
  - D. open up
10. It was a ..... panel that decided the case.
  - A. three members
  - B. three-member
  - C. three-members
  - D. three member
11. My friend and I were ready for the next context .....
  - A. were we?
  - B. isn't it
  - C. don't we?
  - D. weren't we
12. Was this all ..... grandfather said about the issue?
  - A. that
  - B. which
  - C. what
  - D. how
13. I ..... for him, when he was absent.
  - A. stepped on
  - B. stepped of
  - C. stepped in
  - D. stepped over

**The correct reported speech for the sentence in Question 14 below is:**

14. He said, "I don't need anything."  
A. He says I didn't need anything.  
B. He said he doesn't need anything.  
C. He said he didn't need anything.  
D. He says he didn't need anything.

**The correct active form of the sentence in Question 15 below is:**

15. The officer made the arrest. The arrest ..... made.  
A. was  
B. is  
C. are  
D. is being

### SECTION B

Choose from letters **A** to **D**, the one which is **nearest in meaning** to the underlined word in **each** sentence.

16. We listened to a very captivating story.  
A. scary  
B. interesting  
C. embarrassing  
D. sad
17. You were lucky to receive an amiable welcome from the people.  
A. friendly  
B. strange  
C. strong  
D. tricky
18. He built a very sturdy table that could hold heavy items.  
A. rich  
B. big  
C. strong  
D. important
19. Everybody was in terror after the explosion.  
A. fear  
B. captive  
C. surprise  
D. sorrow
20. She urges us to form study groups.  
A. encourages  
B. forces  
C. dares  
D. commands

### SECTION C

In **each** of the following sentences a group of words has been underlined. Choose from the alternatives lettered A to D that **best explains** the underlined group of words.

21. Instead of starting the whole story, why don't you cut to the chase? This means you should .....  
A. go straight to the point without wasting time.  
B. tell the story bit by bit.  
C. hide the main point in the story.  
D. reveal the characters in the story.
22. The learners will go down in flames if they don't study hard. This means that the learners ..... if they don't study hard.  
A. will kneel down  
B. will be punished  
C. will fail  
D. will be ashamed of themselves.
23. He likes to rock the boat anytime we attend a meeting. This means that he ..... during meetings.  
A. likes to ride a boat  
B. causes troubles  
C. likes talk first  
D. is tolerant
24. The bully likes pulling our legs in class. This means that the bully .....  
A. likes teasing.  
B. pinching people in class.  
C. likes fighting people.  
D. slapping pupils' legs.
25. His decision to travel abroad is up in the air. This means his decision to travel .....  
A. is uncertain.  
B. is cancelled.  
C. is certain.  
D. requires food.

### SECTION D

From the list of words lettered A to D, choose the one that is **most nearly opposite in meaning** to the word underlined in each sentence.

26. They have accepted the domestic rules set by the leader.  
A. modern  
B. foreign  
C. natural  
D. updated

27. This is the most essential aspect of what we're discussing.

- A. trivial                      B. important  
C. unlucky                     D. empty

28. You have made a humble submission.

- A. nice                         B. timid  
C. boastful                    D. surprising

29. I became agitated when I misplaced my pen before the exams.

- A. amazed                    B. relaxed  
C. nervous                   D. restless

30. She made it visible for each and everyone.

- A. clear                        B. invisible  
C. gloom                      D. narrowed

### SECTION E

In the following passage the numbered gaps indicate missing words. Against **each** number in the list below the passages are **four** options arranged in columns lettered **A** to **D**. For **each** numbered gap, choose from the options provided, the word that is **most suitable**.

"Instant justice", often called **-31-** or "jungle justice" in Ghana, is a dangerous and unlawful practice where crowds **-32-** suspected wrongdoers without due process. In markets of Accra and the streets of Kumasi, a single accusation, such as theft, can spark violent acts, including beatings with sticks or stones and, in extreme cases, "necklacing," where tyres are set ablaze around a person's neck. This arises from frustration with a slow or corrupt judicial system, but it **-33-** Article 14 of Ghana's 1992 constitution, which guarantees a fair trial, often harms innocent people. True justice comes from **-34-** crimes to the police, allowing proper **-35-** and trusting the courts, ensuring a safer and more civilized society for all Ghanaians.

- |     | <b>A</b>    | <b>B</b>      | <b>C</b>   | <b>D</b>    |
|-----|-------------|---------------|------------|-------------|
| 31. | mob justice | root justice  | chaos      | arrest      |
| 32. | release     | encourage     | punish     | instruct    |
| 33. | reflects    | violates      | reforms    | injects     |
| 34. | overlooking | concealing    | ignoring   | reporting   |
| 35. | observation | investigation | correction | restoration |

### PART B - ORAL LANGUAGE

#### [UNIT I]

From the list **A** to **D**, choose the one which has the **same consonant sound** as the word **underlined** in the sentence below.

36. The witch was lynched.  
A. cache                      B. archive  
C. stitch                      D. sachet
37. It was a new xylophone he bought.  
A. excel                        B. proxy  
C. box                         D. xylem
38. You conquer your fears.  
A. control                      B. cease  
C. chop                         D. set

#### [UNIT II]

From the list **A** to **D**, choose the one which has the **same vowel sound** as the word **underlined** in the sentence below.

39. He took a photo of us.  
A. echo  
B. stop  
C. knot  
D. lot
40. It mourns the dead mother every day.  
A. moans  
B. stones  
C. scorns  
D. lone

**END OF PAPER**

**END OF FIRST TERM EXAMINATION**

December

**MATHEMATICS 2 & 1**

Essay and Objective

2 hours

**2 & 1**

Name: .....

Index Number: .....

## ONE VISION EXAMINATIONS CENTRE (OVEC)

### END OF FIRST TERM EXAMINATION

December

**MATHEMATICS 2 & 1**

**2 hours**

Essay and Objective

**BASIC 8**

Do **not** open this booklet until you are told to do so. While you are waiting, read and observe the following instructions. Write your **name** and **index number** in the spaces provided above.

This booklet consists of two paper. Answer Paper 2 which comes first in your answer booklet and Paper 1 on the Objective Test answer sheet. Paper 2 will last **1** hour after which answer booklet will be collected. Do **not** start Paper 1 until you are told to do so. Paper 1 will last **1** hour.

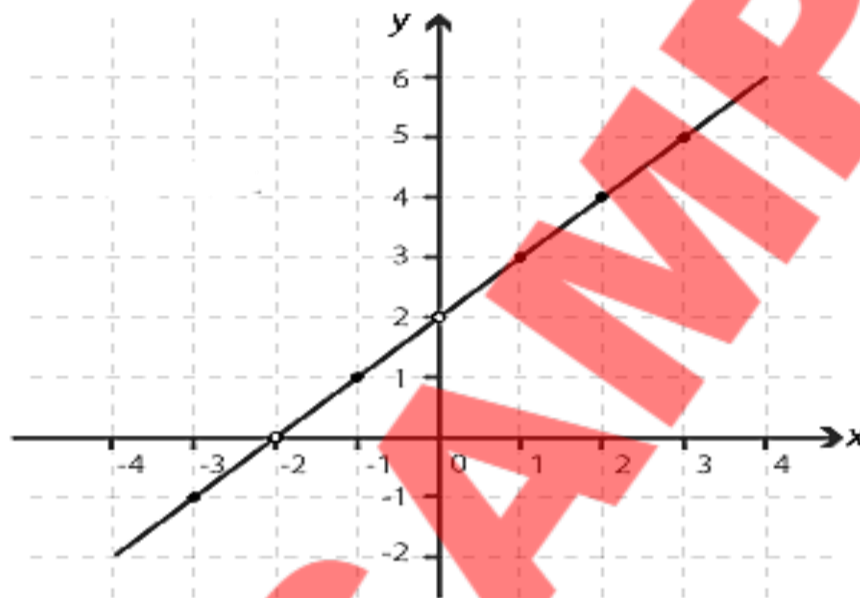
The use of calculators is **not** allowed.

Answer **four** questions **only**.

**All** questions carry equal marks.

**All** working must be clearly shown. Marks will **not** be awarded for **correct** answers without corresponding working.

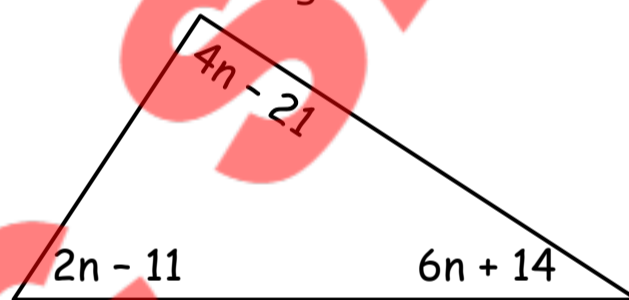
1. (a) The diagram below shows a straight line in a plane. Use it to answer the questions that follow.



- i. Find the gradient of the line.
  - ii. Using the diagram, find the equation of the line.
- (b) There are 720 students in a basic school; if 45% are males, how many of them are females?
- (c) Given that  $W = \{10, 15, 20\}$ , list all the subsets of  $W$ .
- (e) Write the next two terms of the pattern: 1, 4, 9, 16, 25, .....
2. (a) Express 0.09075 in two significant figures and standard form.
- (b) Simplify  $5 - 2m + 2(5m - 6)$
- (c) Dede started riding a bicycle at 11:30 am and stopped after 100 minutes, covering a distance of 25 kilometres.
- i. At what time did he stop cycling?
  - ii. Find his average speed in kilometres per minute, leaving the answer in one decimal place.
- (d) List the prime numbers between 20 and 40.

3. (a) A motorbike consumes a litre of fuel for every 17 km ride. The rider of the bike set out on a journey of 510 km with just 18 litres of fuel in the tank,
- How many more litres of fuel does he need to complete the entire journey?
  - What is the total cost of fuel for the 510 km journey if a litre of fuel costs GH¢15.50?
- (b) The sum of three numbers is 82310. Two of the numbers are 20576 and 45678. Find the third number.
- (c) A property worth GH¢ 12,480.00 is shared between Nti and his six siblings in the ratio 1 : 3 respectively. The siblings shared their portion equally. Find **each** sibling's share.

4. (a) Write 745,978.383 in the nearest hundred thousand and tenth.
- (b) Find the value of  $n$  in the diagram below.



- (c) Given that  $M = \{\text{factors of } 24\}$  and  $D = \{\text{multiples of } 3\}$  are subsets of  $U = \{1, 2, 3, 4, 5, \dots, 20\}$
- list the members of  $M$ ,  $D$  and  $M \cap D$ .
  - Find  $n(M \cup D)$
  - How many subsets does  $M \cap D$  have?

5. (a) Using a ruler and a pair of compasses only:
- construct a triangle  $MNR$  with angle  $\angle NR/ = 8\text{cm}$ ,  $\angle MR/ = 5\text{cm}$  and  $\angle MN/ = 6\text{cm}$ .
  - construct the perpendicular bisector of  $\angle NR/$  and name it  $K1$ .

- iii. construct the perpendicular bisector of  $/MR/$  and name it  $K_2$ .
- iv. Label the intersection of  $K_1$  and  $K_2$  as  $O$ .
- v. with  $O$  as centre and radius  $ON$ , draw a circle.

(b) Measure the radius of the circle.

6. The table below shows the number of goals scored by a football team in a league season.

Number of goals scored	1	2	3	4	5	6
Frequency	4	3	5	6	8	4

- (a) How many matches did the team play?
- (b) Find the median number of goals scored.
- (c) Determine the mode.
- (d) Draw a bar chart to represent the data.

**END OF ESSAY TEST**

# DO NOT TURN OVER THIS PAGE UNTIL YOU ARE TOLD TO DO SO.

**YOU WILL BE PENALIZED SEVERELY IF YOU ARE  
FOUND LOOKING AT THE NEXT PAGE BEFORE  
YOU ARE TOLD TO DO SO.**

## BASIC 8

PAPER 1

1 hour

### OBJECTIVE TEST

Answer all questions on your Objective Test answer sheet.

1. Use **2B** pencil throughout.
2. On the pre-printed answer sheet, check that the following details are **correctly** printed: Your **surname** followed by **other names**, the *Subject Name*, your *Index Number*, *Centre Number* and the *Paper Code*.
3. In the boxes marked *Candidate Number*, *Centre Number* and *Paper Code*, **reshade** each of the shaded spaces.
4. An example is given below. This is for a female candidate whose name is Janet OWUSU, Her *index number* is **772384188** and she is writing the examination at *Centre Number* **77234**. She is offering **Mathematics 1** and the *Paper Code* is **0301**.

ONE VISION EXAMINATIONS CENTRE (OVEC)

BASIC EDUCATION TERMINAL EDUCATION

### OBJECTIVE ANSWER SHEET

<b>CANDIDATE NAME:</b> OWUSU JANET	<b>SUBJECT NAME:</b> MATHEMATICS 1
---------------------------------------	---------------------------------------

- |   |  |
|---|--|
| 1. Use 2B pencil. Press firmly.<br>2. Answer question by choosing one letter and then, shade through the letter chosen like this<br>[A] [B] [C] [D] [E]<br>3. If you want to change an answer, rub out your | first mark completely.<br>4. If only four alternatives answers are given for each question, ignore the letter E<br>5. Your question paper may have fewer than 100 questions. |
|---|--|

CANDIDATE NUMBER									
7	7	2	3	8	4	1	8	8	
[0]	[0]	[0]	[0]	[0]	[0]	[0]	[0]	[0]	[0]
[1]	[1]	[1]	[1]	[1]	[1]	[1]	[1]	[1]	[1]
[2]	[2]	[2]	[2]	[2]	[2]	[2]	[2]	[2]	[2]
[3]	[3]	[3]	[3]	[3]	[3]	[3]	[3]	[3]	[3]
[4]	[4]	[4]	[4]	[4]	[4]	[4]	[4]	[4]	[4]
[5]	[5]	[5]	[5]	[5]	[5]	[5]	[5]	[5]	[5]
[6]	[6]	[6]	[6]	[6]	[6]	[6]	[6]	[6]	[6]
[7]	[7]	[7]	[7]	[7]	[7]	[7]	[7]	[7]	[7]
[8]	[8]	[8]	[8]	[8]	[8]	[8]	[8]	[8]	[8]
[9]	[9]	[9]	[9]	[9]	[9]	[9]	[9]	[9]	[9]

CENTRE NUMBER				
7	7	2	3	4
[0]	[0]	[0]	[0]	[0]
[1]	[1]	[1]	[1]	[1]
[2]	[2]	[2]	[2]	[2]
[3]	[3]	[3]	[3]	[3]
[4]	[4]	[4]	[4]	[4]
[5]	[5]	[5]	[5]	[5]
[6]	[6]	[6]	[6]	[6]
[7]	[7]	[7]	[7]	[7]
[8]	[8]	[8]	[8]	[8]
[9]	[9]	[9]	[9]	[9]

PAPER CODE			
0	3	0	1
[0]	[0]	[0]	[0]
[1]	[1]	[1]	[1]
[2]	[2]	[2]	[2]
[3]	[3]	[3]	[3]
[4]	[4]	[4]	[4]
[5]	[5]	[5]	[5]
[6]	[6]	[6]	[6]
[7]	[7]	[7]	[7]
[8]	[8]	[8]	[8]
[9]	[9]	[9]	[9]

For Supervisors only.

If candidate is absent shade this space.



Answer **all** questions in this section.

Each question is followed by **four** options lettered A to D. Find the **correct** option for **each** question and shade in **pencil** on your answer sheet the answer space which bears the same letter as the option you have chosen. Give only **one** answer to **each** question. An example is given below

If  $3n + 2 = 8$ , find the value of  $n$ .

- A. 10
- B. 6
- C. 3
- D. 2

The correct answer is '2' which is lettered D and therefore answer space D would be shaded.

[ A ]                    [ B ]                    [ C ]                    [ ~~D~~ ]

Think carefully before you shade the answer spaces: erase completely **any** answer you wish to change.

Do all rough work on this question paper. Now answer the following questions

1. If the number sequence is continued, what will be the 8th term? 1, 2, 4, 7, 11, 16, .....

  - A. 27
  - B. 29
  - C. 30
  - D. 32

2. Between 5:30 am and 7:00 am, Kofi runs 18 kilometres. Find his speed in kilometres per minute.

  - A. 0.2 km/m
  - B. 2 km/m
  - C. 0.02 km/m
  - D. 22 km/m

3. Two complementary angles are given as  $(3m - 6)^\circ$  and  $5m^\circ$ . Find the value of  $m$ .

  - A.  $12^\circ$
  - B.  $15^\circ$
  - C.  $22^\circ$
  - D.  $30^\circ$

4. Identify the quadrilateral below.

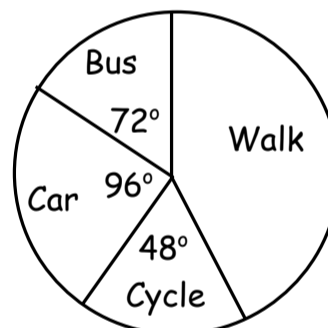


- A. Rhombus
  - B. Trapezium
  - C. Kite
  - D. Parallelogram
5. Amu paid a worker GH¢ 45,982.00, express the amount in the nearest thousand GH¢.
    - A. GH¢ 45,000.00
    - B. GH¢ 46,000.00
    - C. GH¢ 47,000.00
    - D. GH¢ 40,000.00

6. What is the gradient of a straight line with the equation  $3y - 12x = 18$ ?

  - A. 18
  - B. - 12
  - C. 4
  - D. - 3

**The pie chart shows the mode of movement to school of students in a Basic 8 class. Use it to answer questions 7 to 9.**



7. What angle represents walking?

  - A.  $104^\circ$
  - B.  $99^\circ$
  - C.  $144^\circ$
  - D.  $128^\circ$

8. What percentage of the students take the bus to school?

  - A. 10%
  - B. 15%
  - C. 20%
  - D. 25%

9. Find the fraction of the students who go to school by car.

  - A.  $\frac{1}{3}$
  - B.  $\frac{15}{38}$
  - C.  $\frac{8}{21}$
  - D.  $\frac{12}{45}$

10. The angles in a triangle are given as  $45^\circ$ ,  $90^\circ$  and  $45^\circ$ . The triangle is **not** a/an

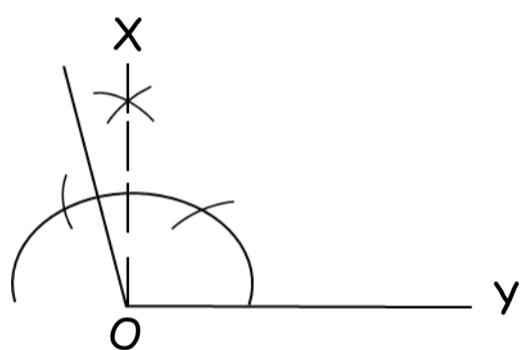
- A. acute angled triangle
- B. right angled triangle
- C. isosceles triangle
- D. obtuse angled triangle

11. Express 3500 as a product of its prime factors.

- A.  $2^2 \times 5^3 \times 7$
- B.  $2^2 \times 5^3 \times 7 \times 11$
- C.  $2^2 \times 5^4 \times 7$
- D.  $2^4 \times 5^3 \times 7$

12. When two angles share a common arm and vertex, they are said to be

- A. interior
- B. alternate
- C. adjacent
- D. supplementary



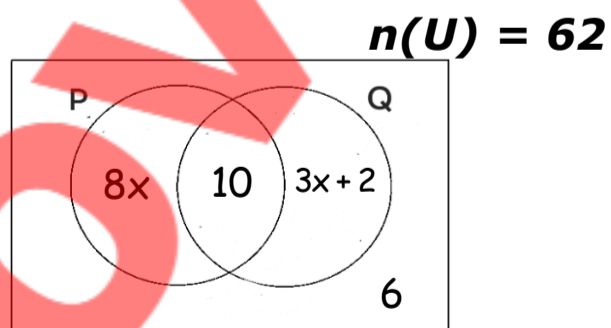
13. In the diagram, angle XOY is

- A.  $90^\circ$
- B.  $105^\circ$
- C.  $120^\circ$
- D.  $135^\circ$

14. Select the qualitative source of data.

- A. Height
- B. Age
- C. Gender
- D. Marks

**Study the Venn diagram below and answer questions 15 to 18.**



15. Express  $n(Q)$  in terms of  $x$ .

- A.  $12 + 3x$
- B.  $10 - 3x$
- C.  $2 + 3x$
- D.  $2 - 13x$

16. Find the value of  $x$ .

- A. 1
- B. 2
- C. 3
- D. 4

17. Find  $n(P)$ .

- A. 42
- B. 44
- C. 49
- D. 58

18. Find  $n(Q)$  only.

- A. 8
- B. 10
- C. 12
- D. 14

19. Half the diameter of a circle gives

- A. chord
- B. radius
- C. segment
- D. circumference

20. Twenty-four bundles of wire cost GH¢ 1080.00. Find the unit price of the wire.

- A. GH¢ 36.00
- B. GH¢ 38.00
- C. GH¢ 42.00
- D. GH¢ 45.00

21. Ama and her father are 5 years and 29 years old, respectively. Find the sum of their ages after 6 years.

- A. 34
- B. 40
- C. 46
- D. 51

22. Express 27,345.9034 in the nearest hundred.

- A. 28,000
- B. 27,300
- C. 27,345.9
- D. 28,345

23. A man had 3500 mango plants. If he gave 37% of them out for planting, how many were left?

- A. 1295
- B. 1845
- C. 2205
- D. 1995

24. Given that  $N(2, -4)$  and  $R(-2, 8)$  are points on a straight line, calculate the gradient (slope) of the line NR.

- A. -3
- B. -4
- C. 4
- D. 2

25. If  $P = \{1, 3, 5, 9\}$  and  $Y = \{9, 10, 14, 20\}$ , both set P and Y are  
 A. disjoint  
 B. universal  
 C. infinite  
 D. equivalent
26. Given that  $2y = 4x + 10$  is the equation of a straight line, find the y-intercept.  
 A. (0, 10)  
 B. (0, 5)  
 C. (0, 2)  
 D. (0, 4)
27. The net weight of a machine is 29.276 kg. Express the weight in two decimal places.  
 A. 29.27  
 B. 30.28  
 C. 29.28  
 D. 30.30
28. A line has an equation  $5y = 4x - 20$ , find x - intercept.  
 A. (5, 0)  
 B. (-4, 0)  
 C. (0, 0)  
 D. (-5, 0)
29. Which of the following sets has only 8 subsets?  
 A.  $\{1, 2, 3, 4\}$   
 B.  $\{10, 12, 15, 20, 30\}$   
 C.  $\{3, 15, 28\}$   
 D.  $\{8\}$
30. A book costs GH¢3.80 and a ruler costs GH¢2.50 in a supermarket. A boy bought nine books and five rulers, and he paid with a GH¢50.00 note. How much change was he given?  
 A. GH¢3.30  
 B. GH¢3.70  
 C. GH¢4.60  
 D. GH¢5.30
31. Given that  $W = \{2, 3, 5, 8, 10\}$  and  $Z = \{1, 3, 7, 8, 9, 10, 12\}$ , how many members does  $W \cup Z$  have?  
 A. 6  
 B. 7  
 C. 8  
 D. 9
32. What is the difference between the 10th and 12th square numbers?  
 A. 21  
 B. 44  
 C. 69  
 D. 96
33. Round 45.57412 to the nearest thousandth.  
 A. 46.574  
 B. 46.570  
 C. 45.575  
 D. 45.574
34. Find the missing number in the sequence 7800750, 7800200, 7799650, ....., 7798550.  
 A. 7,789,550  
 B. 7,798,550  
 C. 7,799,100  
 D. 7,719,100
35. Which of the following is continuous data?  
 A. Shape  
 B. Colour  
 C. Weight  
 D. Religion
36. Express 0.000658 in standard form.  
 A.  $6.58 \times 10^3$   
 B.  $6.58 \times 10^{-4}$   
 C.  $6.58 \times 10^4$   
 D.  $6.58 \times 10^{-3}$
37. Given that  $E = \{\text{factors of } 30\}$  and  $F = \{\text{multiples of } 12\}$ . What type of set is  $E \cap F$ ?  
 A. Equivalent set  
 B. Equal set  
 C. Joint set  
 D. Null set
38. Write 16,968,239 correctly to the nearest hundred thousand.  
 A. 17,000,000  
 B. 16,900,000  
 C. 16,800,000  
 D. 17,100,000
39. Fourteen boys used six days to dig a trench. How long would it take twelve boys to do the same work if they work at the same rate?  
 A. 6 days  
 B. 7 days  
 C. 8 days  
 D. 9 days
40. Find the mode of the data: 4, 6, 7, 4, 3, 9, 4, 3, and 6.  
 A. 3  
 B. 4  
 C. 7  
 D. 9

**END OF FIRST TERM EXAMINATION**  
December  
**SCIENCE 2 & 1**  
Essay and Objective  
2 hours 10 minutes

Name: .....

Index Number: .....

**2 & 1**

**ONE VISION EXAMINATIONS CENTRE (OVEC)**

**END OF FIRST TERM EXAMINATION**

December

**SCIENCE 2 & 1**

**2 hours 10 minutes**

Essay and Objective

**BASIC 8**

Do **not** open this booklet until you are told to do so. While you are waiting, read and observe the following instructions carefully. Write your **name** and **index number** in **ink** in the spaces provided above.

This booklet consists of **two** parts. Answer Paper 2 which comes first in your answer booklet and Paper 1 on the Objective Test answer sheet. Paper 2 will last **1** hour **25** minutes after which answer booklet will be collected. Do **not** start Paper 1 until you are told to do so. Paper 1 will last **45** minutes.

PAPER 2  
ESSAY  
[100 marks]

This paper is in **two** sections: **A** and **B**. Answer Question **1** in section **A** and any other **three** questions in section **B**.

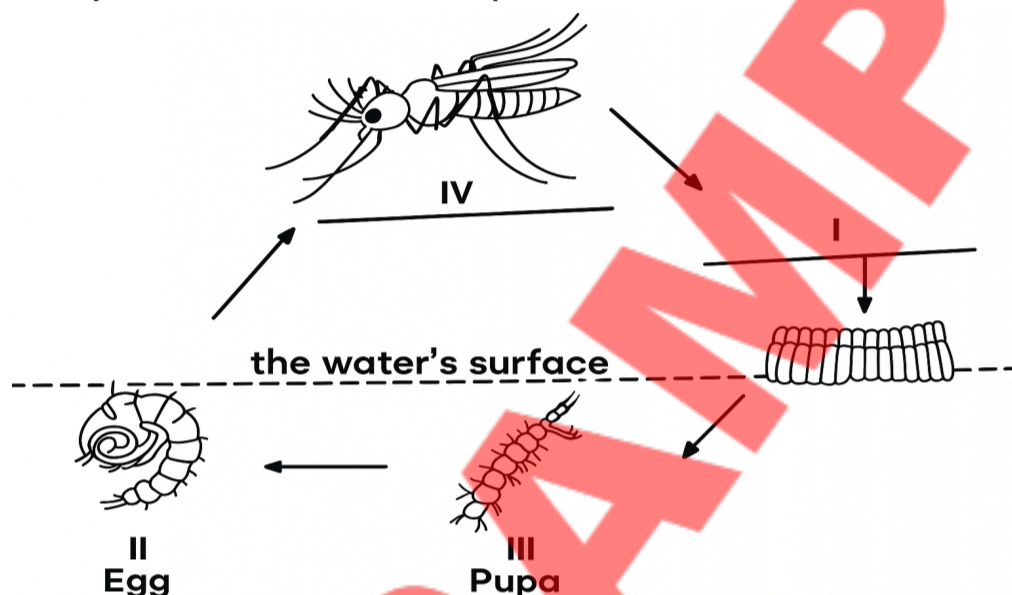
Answer **all** the questions in your answer booklet.

Credit will be given for clarity of expression and orderly presentation of material.

SECTION A  
[40 marks]

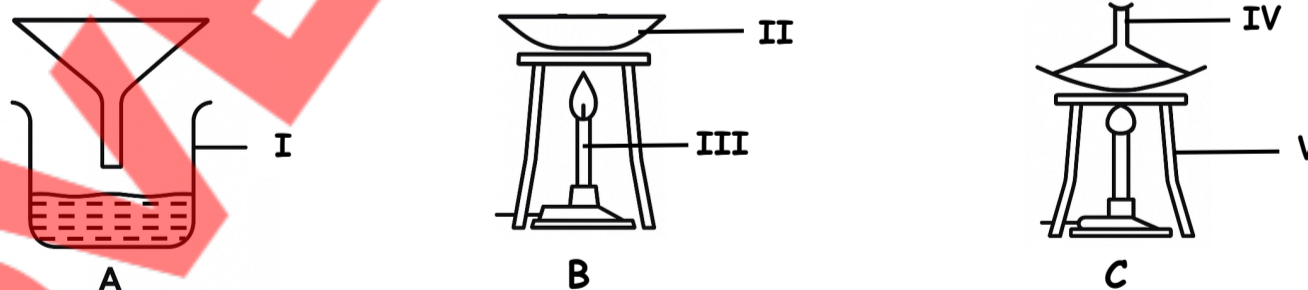
Answer **all** questions in this section.

1. (a) Figure 1(a) is an illustration of the life cycle of an organism. Study the diagram carefully and answer the questions that follow.



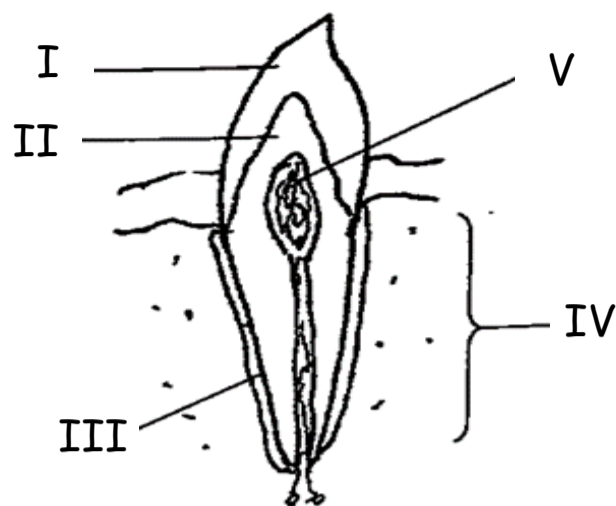
- Identify the organism above.
- Name the class the organism belongs to.
- Explain why the organism is said to be a vector.
- State how stage **II** obtains oxygen.
- State two methods of controlling each of the stages labelled **III** and **IV**.

- (b) Figure 1(b) shows three different experimental setups, labelled A, B and C, used in the separation of mixtures. Study the diagram carefully and answer the questions that follow.



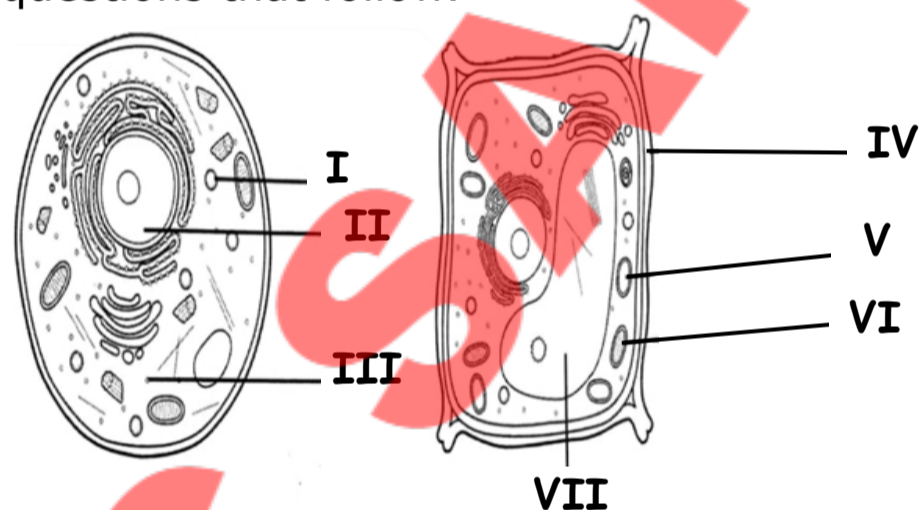
- Name the separation method represented by each set-up labelled **A**, **B** and **C**.
- Which of the set-ups is used:
  - to obtain clear water from muddy water;
  - for crystallization.
- State the functions of the parts labelled **III** and **V**.
- Write three properties of the substance obtained in the part labelled **I** in set -up A.
- Briefly explain how to separate a mixture of iron pins and sand particles.

(c) Figure 1(c) is an illustration of a longitudinal section of a canine tooth in humans. Study the diagram carefully and answer the questions that follow.



- Describe how the structure enables the tooth to tear food.
- Name each of the parts labelled **I**, **II**, **III** and **IV**.
- State three diseases that affect the human tooth.
- Describe briefly how one of the dental diseases stated in (III) occurs.

(d) Figure 1 (d) shows the diagrams of two living cells. Study them carefully and answer the questions that follow.



- What type of cell do the diagrams labelled **A** and **B** belong to?
- Name the parts labelled **I**, **II**, **IV** and **VII**.
- State three differences between living cell **A** and cell **B**.
- State three similarities between living cell **A** and cell **B**.

**SECTION B**  
[60 marks]

Answer **three** Questions **only** from this section.

- (a) i. Define the following:
  - Living cell;
  - Eukaryotes;
  - Prokaryotes.

- ii. Give two examples each of;
- (a) Eukaryotes;
  - (β) Prokaryotes.
- (b) i. An atom is represented as  ${}^{39}_{19}\text{W}$
- Identify:
- i. The neutron number;
  - ii. The number of electrons;
  - iii. The atomic number;
  - iv. State the electronic configuration of the atom.
- (c) i. Explain the term carbon cycle.
- ii. With two reasons, explain why the carbon cycle is a repeated pattern.
  - iii. State two ways to maintain the carbon cycle.
- (d) i. Outline two advantages of sunken beds over raised seed beds.
- ii. Mention three (3) tools used for seedbed preparation.
  - iii. Why are seedbeds important in crop production?
3. (a) i. State three importance of feeding in farm animals.
- ii. Mention four benefits derived from rearing farm animals in Ghana.
  - iii. State three importance of water in farm animal production.
- (b) i. In what three ways is the anopheles mosquito economically important?
- ii. State three solutions used to control malaria in Ghana.
  - iii. Mention three common symptoms of malaria.
- (c) i. Outline the various steps used to separate a mixture of sand and salt.
- ii. State two ways air differs from Sodium chloride.
  - iii. Explain why atoms are said to be electrically neutral.
- (d) Explain the following:
- i. bioremediation
  - ii. biotechnology
  - iii. State two diseases caused by prokaryotes in humans.
4. (a) i. Distinguish between hay and silage.
- ii. Explain the term ration as used in animal production.
  - iii. Give two cultural practices involved in eggplant production.
- (b) i. Define isotopes.
- ii. The element neon (Ne), with atomic number 10, has three isotopes of mass numbers 17, 19 and 21. Determine the number of neutrons present in each of the isotopes.
  - iii. Briefly describe how ions are formed.

- (c) Name the types of seedbed you will select in the school garden under the following conditions, with reason:
- Rainy season
  - Dry season
- (d) i. Explain the following animal feeds:
- Roughages;
  - Supplements;
  - Basal feeds.
- ii. State two effects of providing inadequate water to farm animals.
5. (a) The atomic number of atom K is 17 and its mass number is 35. If the atom gains an electron, to becomes stable. Determine:
- The number of electrons is before gaining an electron;
  - The number of electrons after gaining the electrons;
  - Draw the electronic configuration of the atom after gaining the electron, showing the positions of the protons, electrons, the charge, as well as the arrangement of the electrons in the various shells.
- (b) i. State four causes of dental disorders in humans.
- Mention four ways of ensuring proper dental care in humans.
  - Give two food nutrients to keep the human tooth healthy and strong.
- (c) Define the following:
- Solute;
  - Solution;
  - Solvent.
- (d) i. Define the term photosynthesis.
- Explain the importance of photosynthesis in the carbon cycle.

***END OF ESSAY TEST***

**BASIC 8**

**SCIENCE**

**DO NOT TURN OVER THIS PAGE  
UNTIL YOU ARE TOLD TO DO SO.**

**YOU WILL BE PENALIZED SEVERELY IF YOU ARE  
FOUND LOOKING AT THE NEXT PAGE BEFORE  
YOU ARE TOLD TO DO SO.**

Answer **all** questions in this section.

Each question is followed by **four** options lettered A to D. Find the **correct** option for **each** question and shade in **pencil** on your answer sheet the answer space which bears the same letter as the option you have chosen. Give only **one** answer to **each** question. An example is given below

Which of the following substances is not an element?

- A. Aluminium
- B. Ammonia
- C. Oxygen
- D. Sodium

The correct answer is 'Ammonia' which is lettered B and therefore answer space B would be shaded.

[ A ]                    ~~[ B ]~~                    [ C ]                    [ D ]

Think carefully before you shade the answer spaces: erase completely any answer you wish to change.

Do **all** rough work on this question paper. Now answer the following questions

1. Which of the following substances is a mixture?
  - A. Sodium chloride
  - B. Sugar solution
  - C. Sulphur dioxide
  - D. carbon dioxide
2. Metals are drawn into wires. This property is known as
  - A. luster
  - B. ductility
  - C. malleability
  - D. resistivity
3. A mixture of engine oil and water could be best separated by
  - A. decantation
  - B. freezing
  - C. evaporation
  - D. heating
4. An example of a prokaryote is
  - A. amoeba
  - B. paramecium
  - C. archea
  - D. yeast
5. The following processes release carbon, except
  - A. respiration
  - B. combustion
  - C. volcanic eruption
  - D. photosynthesis
6. The third stage in the life cycle of a mosquito is called
  - A. egg
  - B. larva
  - C. Adult
  - D. Pupa
7. The process that occurs when gases in the Earth's atmosphere trap the sun's heat is called
  - A. Greenhouse gases
  - B. Greenhouse effect
  - C. Global warming
  - D. Carbon cycle
8. Which of the following is the valency of  $\text{Ca}^{2+}$ ?
  - A. 1
  - B. 3
  - C. 2
  - D. 4
9. Mosquito pupae breathe through tubes called
  - A. trachea
  - B. gills
  - C. siphon
  - D. lungs
10. Which of the following metals is in group 3 in the periodic table?
  - A. Sodium
  - B. Aluminum
  - C. Duralumin
  - D. Chlorine

11. An example of a crop grown on a sunken bed is  
 A. beans  
 B. carrot  
 C. onions  
 D. potatoes
12. The part used to propagate yam is called  
 A. corm  
 B. sett  
 C. rhizome  
 D. sucker
13. All the following feeds are roughages except  
 A. silage  
 B. pasture forages  
 C. hay  
 D. maize
14. The hardest part of the mammalian tooth is  
 A. enamel  
 B. dentine  
 C. pulp cavity  
 D. neck
15. The following can serve as the breeding grounds for mosquitoes, except  
 A. dry sand  
 B. pond  
 C. empty can filled with water  
 D. stagnant water
16. Carbon recycling takes place between  
 A. animals and plants  
 B. plants and the atmosphere  
 C. living things and the environment  
 D. living things and water
17. The part of the tooth that is embedded in the jawbone is  
 A. root  
 B. enamel  
 C. gum  
 D. dentine
18. How many times does the larva shed its skin before becoming a pupa?  
 A. 3  
 B. 2  
 C. 4  
 D. 5
19. Concentrates are made up of  
 A. nutrients that are condensed into a large amount of food  
 B. vitamins only  
 C. nutrients that are condensed into a small amount of food  
 D. carbohydrate and protein only
20. Prokaryotic cells have the following, except  
 A. cell membrane  
 B. cytoplasm  
 C. membrane-bound organelles  
 D. DNA
21. Animal feed that contains all the essential nutrients in the right amount and proportion is called  
 A. ration  
 B. roughage  
 C. protein food  
 D. balanced ration
22. A neutral atom with 19 protons has how many electrons?  
 A. 18  
 B. 19  
 C. 17  
 D. 20
23. An animal feed with a high proportion of easily digestible carbohydrates is  
 A. roughages  
 B. concentrates  
 C. basal feed  
 D. grass pasture
24. An example of a crop grown on a raised bed is  
 A. chilies  
 B. eggplants  
 C. herbs  
 D. melons
25. The major source of energy for farm animals is  
 A. carbohydrate  
 B. vitamins  
 C. minerals  
 D. proteins

26. The main component of the prokaryotic cell wall is  
 A. cellulose  
 B. chitin  
 C. peptidoglycan  
 D. lipopolysaccharide
27. Which of the following parasites causes malaria?  
 A. Tick  
 B. Plasmodium  
 C. Schistoma  
 D. Onchocerca
28. An example of greenhouse gas is  
 A. chlorine gas  
 B. oxygen  
 C. water vapour  
 D. sulphur dioxide
29. An organism with only one cell is called  
 A. unicellular organism  
 B. multicellular organism  
 C. protoplasm  
 D. living organism
30. The part of a cell that provides internal organization and mechanical support is called  
 A. cytoplasm  
 B. cytoskeleton  
 C. ribosome  
 D. golgi body
31. The process whereby microbes are used to remove pollutants from the environment is called  
 A. biotechnology  
 B. biochemistry  
 C. bioremediation  
 D. biological nitrogen fixation
32. After filtration, the insoluble particles trapped on the filter paper are called  
 A. distillate  
 B. filtrate  
 C. residue  
 D. dirt
33. An atom has 5 protons and 5 neutrons in its nucleus. What is the mass of the atom?  
 A. 5  
 B. 10  
 C. 25  
 D. 0
34. An example of a multicellular organism that is a eukaryotes is  
 A. fungi  
 B. plasmodium  
 C. spirogyra  
 D. paramecium
35. Which of the following is the most important nitrogen fixer in the aquatic environment?  
 A. Azotobacter  
 B. Cyanobacteria  
 C. Clostridium  
 D. Plannococcus
36. The random motion of colloidal particles in a fluid is called  
 A. brownian motion  
 B. circular motion  
 C. colloidal effect  
 D. tyndall effect
37. Water is said to be a universal solvent because  
 A. it is very common  
 B. it is neutral  
 C. it dissolves most substances  
 D. it is colourless
38. The group of an element can be determined by the  
 A. number of shell  
 B. atomic number  
 C. mass number  
 D. the valence electron
39. The ability of a colloidal particle to scatter beams of light when incident on it is called  
 A. incident ray  
 B. refracted ray  
 C. tyndall effect  
 D. brownie motion
40. A negatively charged ion is called  
 A. cation  
 B. valency  
 C. radical  
 D. anion

**END OF FIRST TERM EXAMINATION**

December

**SOCIAL STUDIES**

**2 & 1**

Essay and Objective

**1 hour 45 minutes**

**2 & 1**

Name: .....

Index Number: .....

## ONE VISION EXAMINATIONS CENTRE (OVEC)

### END OF FIRST TERM EXAMINATION

December

**SOCIAL STUDIES 2 & 1**

**1 hour 45 minutes**

Essay and Objective

**BASIC 8**

Do **not** open this booklet until you are told to do so. While you are waiting, read and observe the following instructions carefully. Write your **name** and **index number** in **ink** in the spaces provided above.

This booklet consists of **two** parts. Answer Paper 2 which comes first in your answer booklet and Paper 1 on the Objective Test answer sheet. Paper 2 will last **1** hour after which answer booklet will be collected. Do **not** start Paper 1 until you are told to do so. Paper 1 will last **45** minutes.

Credit will be given for clarity of expression and orderly presentation of material.

## ESSAY

[60 MARKS]

This paper consists of **three** sections; **I, II** and **III**. Answer **three** questions **only**. **One** compulsory question and **two** other questions from section **II** and **III** respectively. **All** questions carry **equal** marks.

## SECTION I (COMPULSORY)

## THE ENVIRONMENT

1. (a) i. Explain energy conservation. **[3 marks]**
- ii. Maame Mfante, a cold store owner, notices that recently her electricity bills are very high and her business profits are dropping. Highlight **five** responsible uses of energy that can help reduce both economic and environmental costs. **[5 marks]**
- (b) i. Define water pollution as an environmental challenge. **[4 marks]**
- ii. In a certain community in Ghana, a river that supplies water to nearby communities has turned brown and gives off a bad smell. Residents report that small-scale gold miners (galamsey) are washing soil and chemicals like mercury into the river. Nearby, a factory discharges untreated wastewater into the same river, and some households dump rubbish directly into it. As a concerned citizen, discuss **four** effects of water pollution in the community. **[8 marks]**

## SECTION II

### LAW, ORDER AND NATION BUILDING

Answer **one** question **only** from this section.

2. (a) The family is the basic unit of society and plays a vital role in shaping individuals, communities, and cultures. Explain **four** importance of the family as a social institution. **[8 marks]**
- (b) Examine the composition and structure of the nuclear family system. **[6 marks]**
- (c) Agya Tetteh, a businessman, dies without a will. He leaves behind a wife, three children, and his late father's nephew. Before the Intestate Succession Law, 1985 (PNDCL 111), most of his property would have gone to the extended family, leaving little for his wife and children. Under the law, his wife and children now receive a fair share of the estate. Discuss **three** advantages of the intestate succession law in Ghana. **[6 marks]**
3. (a) Explain the meaning of human rights. **[4 marks]**
- (b) Outline **six** basic human rights of Ghanaians under the 1992 constitution. **[6 marks]**
- (c) You have been invited to a local radio station to speak to the public about their responsibilities as citizens of Ghana. Many people are unaware of these responsibilities, which is why they do not actively participate in national duties. Using this opportunity, educate the public on the **five** responsibilities of citizens of Ghana. **[10 marks]**

### SECTION III

#### SOCIAL AND ECONOMIC DEVELOPMENT

Answer **one** question **only** from this section.

4. Over the years, the annual spillage of the Bagre Dam has caused widespread flooding in downstream communities in Ghana, particularly in the Upper East and North East Regions that damages homes and displaces several families. Without being asked, a group of young people from the community came together to help. They clean the affected areas, provide food and clothing, and assist the elderly in moving to safer places.
- (a) State and explain the act described above. **[4 marks]**
- (b) Examine **four** benefits of the act named in 4(a) to individuals involved in the community development. **[8 marks]**
- (c) Outline **four** other ways one can offer him/herself in the community. **[8 marks]**
5. (a) Write what you understand by community development. **[4 marks]**
- (b) Examine **four** factors to be considered in community development decision-making. **[8 marks]**
- (c) Describe **four** importance of community development. **[8 marks]**

**END OF ESSAY TEST**

# DO NOT TURN OVER THIS PAGE UNTIL YOU ARE TOLD TO DO SO.

**YOU WILL BE PENALIZED SEVERELY IF YOU ARE  
FOUND LOOKING AT THE NEXT PAGE BEFORE  
YOU ARE TOLD TO DO SO.**

## BASIC 8

45 minutes

### PAPER 1

#### OBJECTIVE TEST

Answer all questions on your Objective Test answer sheet.

1. Use **2B** pencil throughout.
2. On the pre-printed answer sheet, check that the following details are **correctly** printed: Your **surname** followed by **other names**, the *Subject Name*, your *Index Number*, *Centre Number* and the *Paper Code*.
3. In the boxes marked *Candidate Number*, *Centre Number* and *Paper Code*, **reshade** each of the shaded spaces.
4. An example is given below. This is for a female candidate whose name is Janet OWUSU, Her *Index Number* is **772384188** and she is writing the examination at Centre Number **77234**. She is offering **Social Studies 1** and the Paper Code is **0201**.

ONE VISION EXAMINATIONS CENTRE (OVEC)

BASIC EDUCATION TERMINAL EXAMINATION

#### OBJECTIVE ANSWER SHEET

<b>CANDIDATE NAME:</b> OWUSU JANET	<b>SUBJECT NAME:</b> SOCIAL STUDIES 1
---------------------------------------	--

1. Use 2B pencil. Press firmly.	first mark completely.
2. Answer question by choosing <b>one</b> letter and then, shade <b>through</b> the letter chosen like this [A] [B] [C] [D] [E]	4. If only four alternatives answers are given for each question, ignore the letter E
3. If you want to change an answer, rub out your	5. Your question paper may have fewer than 100 questions.

CANDIDATE NUMBER									
7	7	2	3	8	4	1	8	8	
[0]	[0]	[0]	[0]	[0]	[0]	[0]	[0]	[0]	[0]
[1]	[1]	[1]	[1]	[1]	[1]	[1]	[1]	[1]	[1]
[2]	[2]	[2]	[2]	[2]	[2]	[2]	[2]	[2]	[2]
[3]	[3]	[3]	[3]	[3]	[3]	[3]	[3]	[3]	[3]
[4]	[4]	[4]	[4]	[4]	[4]	[4]	[4]	[4]	[4]
[5]	[5]	[5]	[5]	[5]	[5]	[5]	[5]	[5]	[5]
[6]	[6]	[6]	[6]	[6]	[6]	[6]	[6]	[6]	[6]
[7]	[7]	[7]	[7]	[7]	[7]	[7]	[7]	[7]	[7]
[8]	[8]	[8]	[8]	[8]	[8]	[8]	[8]	[8]	[8]
[9]	[9]	[9]	[9]	[9]	[9]	[9]	[9]	[9]	[9]

CENTRE NUMBER				
7	7	2	3	4
[0]	[0]	[0]	[0]	[0]
[1]	[1]	[1]	[1]	[1]
[2]	[2]	[2]	[2]	[2]
[3]	[3]	[3]	[3]	[3]
[4]	[4]	[4]	[4]	[4]
[5]	[5]	[5]	[5]	[5]
[6]	[6]	[6]	[6]	[6]
[7]	[7]	[7]	[7]	[7]
[8]	[8]	[8]	[8]	[8]
[9]	[9]	[9]	[9]	[9]

PAPER CODE			
0	2	0	1
[0]	[0]	[0]	[0]
[1]	[1]	[1]	[1]
[2]	[2]	[2]	[2]
[3]	[3]	[3]	[3]
[4]	[4]	[4]	[4]
[5]	[5]	[5]	[5]
[6]	[6]	[6]	[6]
[7]	[7]	[7]	[7]
[8]	[8]	[8]	[8]
[9]	[9]	[9]	[9]

For Supervisors only.

If candidate is absent shade this space.



Answer **all** questions in this section.

Each question is followed by **four** options lettered A to D. Find the **correct** option for **each** question and shade in **pencil** on your answer sheet the answer space which bears the same letter as the option you have chosen. Give **only one** answer to **each** question. An example is given below

The capital city of Ghana is

- A. Accra.
- B. Cape Coast.
- C. Kumasi.
- D. Tamale.

The correct answer is 'Accra' which is lettered **A** and therefore answer space **A** would be shaded.

[ A ]                      [ B ]                      [ C ]                      [ D ]

Think carefully before you shade the answer spaces: erase completely any answer you wish to change.

Do all rough work on this question paper. Now answer the following questions

1. What law governs the distribution of a deceased person's estate in Ghana if there is no will?
  - A. Wills Act
  - B. Intestate Succession Act
  - C. Administration of Estates Act
  - D. Customary Law
2. What is a major cause of water pollution in Ghana?
  - A. Industrial waste
  - B. Agricultural runoff
  - C. Untreated sewage
  - D. All of the above
3. What is a way to prevent conflicts in Ghana?
  - A. Promoting dialogue and mediation
  - B. Ignoring community issues
  - C. Using force to resolve disputes
  - D. Imposing one's will on others
4. Which energy source is renewable and can help conserve non-renewable resources?
  - A. Fossil fuels
  - B. Nuclear energy
  - C. Solar energy
  - D. Coal
5. Among the Akan people, what do they call a will that is spoken instead of written down?
  - A. Nuncupative Will
  - B. Holographic Will
  - C. Samansiw
  - D. Codicil
6. Which of these is a major cause of water pollution in Ghana's rivers and lakes?
  - A. Gold mining (galamsey)
  - B. Planting trees
  - C. Building dams
  - D. Rainwater harvesting
7. How does untreated sewage affect water?
  - A. Makes water taste sweet
  - B. Causes diseases like cholera and typhoid
  - C. Cleans the water naturally
  - D. Increases fish population
8. Which government agency in Ghana is responsible for monitoring water quality?
  - A. Ghana Water Corporation
  - B. Environmental Protection Agency (EPA)
  - C. Institute of Quality Water Board
  - D. Ministry of Sanitation
9. The line of descent of a family is known as
  - A. lineage
  - B. succession
  - C. hereditary
  - D. inheritance
10. Water pollution can be minimized through the following, except
  - A. attitudinal change
  - B. law enforcement
  - C. use of chemicals for fishing
  - D. public education

11. The nuclear family is a primary group because
- all the children are taken care of
  - it is the smallest unit in any society
  - it is the first unit that the child interacts with others
  - members have affection for each other
12. As a responsible citizen, it's our civic duty and political right to participate in
- going to school every day
  - attending church service
  - voting in an election
  - travelling outside the country
13. The Ewes practice the ..... system of inheritance.
- matrilineal
  - patrilineal
  - intestate
  - external
14. The act of contributing free labour to support the community is known as
- volunteer
  - volunteerism
  - labourer
  - patriotic
15. A unified body of individuals with mutual interests living in a particular area is known as
- country
  - state
  - community
  - culture
16. The harmful materials released into the environment are called
- pollutant
  - pollution
  - chemicals
  - waste
17. Which of the following is a form of economic right?
- Right to work
  - Right to legal aid
  - Right to personal security
  - Right to education
18. An individual whose rights have been infringed upon seeks justice from the
- presidency
  - police
  - court
  - hospital
19. Conserving energy also means ..... energy for longer use.
- wasting
  - preserving
  - processing
  - renewing
20. The PNDC law was enacted to lessen the burden of
- widows and widowers
  - widowers and children
  - women and men
  - widows and children
21. The effort made to reduce the consumption of energy is known as
- energy conservation
  - energy restoration
  - energy efficient
  - power strip
22. The basic social unit in every society is known as the
- school
  - friend
  - family
  - marriage
23. Inheritance acquired through the mother's lineage of descent is known as
- matrilineal
  - patrilineal
  - intestate
  - succession
24. Which of the following leaders is not elected directly by the people in a democratic system?
- Parliamentarians
  - Chief
  - President
  - Assembly members
25. Stronger emotional bonds, enjoyment of privacy, financial flexibility and independence are advantages associated with which family type?
- Patrilineal
  - Extended
  - Hereditary
  - Nuclear

26. The system by which a foreigner acquires citizenship of another country is
- registration
  - adoption
  - naturalization
  - birth
27. The basic rights and freedoms that every individual or person is entitled to enjoy from birth until death are known as
- universal rights
  - human rights
  - declaration rights
  - constitutional rights
28. Protection, provision of physical needs, and settlement of disputes in the family is a role performed in the nuclear family by the
- mother
  - uncle
  - children
  - father
29. The contamination of water sources such as rivers, streams, by substances that make water unsafe for use is known as
- water pollutant
  - water pollution
  - water chemicals
  - water waste
30. To die intestate means
- to die with a property
  - to die without a property
  - to die without a will
  - to die with a will
31. Your school has decided to conduct research on the prevalence of teenage pregnancy in the community. What should be the primary consideration when undertaking this research?
- Source of funds
  - Investigation
  - Reason behind
  - Population of the people
32. A process where community members come together to take collective action and generate solutions to problems is known as
- community initiative
  - community development
  - volunteerism
  - community support
33. Foreigners in Ghana can enjoy all the following rights except
- right to work
  - freedom of worship
  - right to life
  - right to vote
34. The simplest way of purifying polluted water is through
- distillation
  - condensation
  - boiling
  - filtration
35. If a person suspected of being a thief is beaten up by a mob, he/she is denied the right to
- vote
  - fair trial
  - speech
  - life
36. What is the best way of conserving energy in our communities?
- Turned appliances on when not in use
  - Using old incandescent bulbs
  - Investing in energy-efficient appliances
  - Constantly using water heaters
37. The role of an individual towards community development includes all except
- being patriotic
  - attending communal labour
  - positive change in attitude
  - collection of taxes
38. The following are responsibilities of a citizen except
- obedience to laws
  - voluntary service
  - payment of taxes
  - violent during election
39. The practice of passing on materials or properties from a deceased person to another person is known as
- inheritance
  - will
  - intestate
  - succession
40. A legal term referring to a deceased person's closest living relative is called
- next of kin
  - intestate successor
  - abusuapanin
  - crown inheritance

**END OF FIRST TERM EXAMINATION**

December

**RELIGIOUS AND  
MORAL EDUCATION  
2 & 1**

Essay and Objective

1 hour 45 minutes

**2 & 1**

Name: .....

Index Number: .....

**ONE VISION EXAMINATIONS CENTRE (OVEC)**

**END OF FIRST TERM EXAMINATION**

December

**RELIGIOUS AND MORAL EDUCATION 2 & 1**

**1 hour 45 minutes**

Essay and Objective

**BASIC 8**

*Do **not** open this booklet until you are told to do so. While you are waiting, read and observe the following instructions carefully. Write your **name** and **index number** in **ink** in the spaces provided above.*

*This booklet consists of **two** parts. Answer Paper 2 which comes first in your answer booklet and Paper 1 on the Objective Test answer sheet. Paper 2 will last **1** hour after which answer booklet will **be** collected. Do **not** start Paper 1 until you are told to do so. Paper 1 will last **45** minutes.*

*This paper consists of **two** sections: **A** and **B**. Answer **three** questions **in all**. Answer question **one** from section **A** and **any** other **two** questions from section **B**. **All** questions carry **equal** marks. Answer all the questions in your answer booklet. Credit will be given for expression and orderly presentation of materials*

**SECTION A**  
**COMPULSORY**

1. (a) Define rites of passage. **[2 marks]**
- (b) The Frimpong family is preparing to name their newborn. Since the child was born on a Friday, she automatically bears the name Ama before her full name is revealed at the naming ceremony. Her father, Kwadwo Frimpong, is considering several factors in choosing a suitable name for his daughter. What are some of the factors he is **likely** to consider? Mention **five**. **[10 marks]**
- (c) After Kwadwo Frimpong has chosen a suitable name for his daughter, the family and community gather for the naming ceremony. Explain **four** reasons why the naming ceremony is cherished in the community. **[8 marks]**

## SECTION B

Answer **two** questions **only** from this section.

2. Kwame and Akosua have decided to get married in the bonds of holy matrimony. Their families come together to plan the traditional marriage rites, where customs, family values, and blessings play an important role before the church or civil wedding.
- (a) Explain the concept of marriage to the soon-to-be couples. **[4 marks]**
- (b) As Kwame and Akosua prepare for marriage, they have been advised to be aware of possible challenges that couples often face. Discuss **four likely** causes of problems couples go through in their marriage. **[8 marks]**
- (c) Advise the soon-to-be couples on **four things** that will make their marriage successful. **[8 marks]**
3. During one RME class, your teacher asked the entire class, "Do you know how the world began?" The class shook their heads curiously. Your teacher then opened the Bible to Genesis and began to tell the story of how God created the heavens, the earth, the plants, animals, and finally human beings.
- (a) From this story, narrate the story of creation according to the Bible. **[14 marks]**
- (b) Mention **three attributes** of God that can be learnt from the story. **[6 marks]**
4. Recently, many people in your community have become worried about the rise of certain diseases that threaten their health. To address this, local health officials are creating awareness and educating residents about some common life-threatening illnesses.
- (a) Identify **four** common diseases that can cause death in your community. **[4 marks]**
- (b) Give **four** reasons why death rites are performed in your community. **[8 marks]**
- (c) Discuss **four** moral lessons in the rites of passage. **[8 marks]**

5. Ama, a 13-year-old girl, has just had her first menstruation. Her family and community see this as the beginning of her journey into womanhood and prepare to guide her with values and responsibilities. Like Ama, many young people experience puberty, which comes with physical, emotional, and social changes.

(a) What is puberty? **[4 marks]**

(b) What is the importance of this rite to the people in your community? State **four**. **[8 marks]**

(c) State **four** emotional changes that are associated with puberty. **[8 marks]**

**END OF ESSAY TEST**

# DO NOT TURN OVER THIS PAGE UNTIL YOU ARE TOLD TO DO SO.

**YOU WILL BE PENALIZED SEVERELY IF YOU ARE  
FOUND LOOKING AT THE NEXT PAGE BEFORE  
YOU ARE TOLD TO DO SO.**

## BASIC 8

45 minutes

### PAPER 1

#### OBJECTIVE TEST

Answer all questions on your Objective Test answer sheet.

1. Use **2B** pencil throughout.
2. On the pre-printed answer sheet, check that the following details are **correctly** printed: Your **surname** followed by **other names**, the *Subject Name*, your *Index Number*, *Centre Number* and the *Paper Code*.
3. In the boxes marked *Candidate Number*, *Centre Number* and *Paper Code*, **reshade** each of the shaded spaces.
4. An example is given below. This is for a female candidate whose name is Janet OWUSU, Her *Index Number* is **772384188** and she is writing the examination at Centre Number **77234**. She is offering **Religious and Moral Education 1** and the Paper Code is **0221**.

ONE VISION EXAMINATIONS CENTRE (OVEC)

BASIC EDUCATION TERMINAL EDUCATION

#### OBJECTIVE ANSWER SHEET

<b>CANDIDATE NAME:</b> OWUSU JANET	<b>SUBJECT NAME:</b> RELIGIOUS AND MORAL EDU. 1
---------------------------------------	--

- |  |   |
|--|---|
| 1. Use 2B pencil. Press firmly.  | first mark completely.  |
| 2. Answer question by choosing one letter and then, shade through the letter chosen like this<br>[A] [B] [C] [D] [E] | 4. If only four alternatives answers are given for each question, ignore the letter E |
| 3. If you want to change an answer, rub out your   | 5. Your question paper may have fewer than 100 questions.                             |

CANDIDATE NUMBER									
7	7	2	3	8	4	1	8	8	
[0]	[0]	[0]	[0]	[0]	[0]	[0]	[0]	[0]	[0]
[1]	[1]	[1]	[1]	[1]	[1]	[1]	[1]	[1]	[1]
[2]	[2]	[2]	[2]	[2]	[2]	[2]	[2]	[2]	[2]
[3]	[3]	[3]	[3]	[3]	[3]	[3]	[3]	[3]	[3]
[4]	[4]	[4]	[4]	[4]	[4]	[4]	[4]	[4]	[4]
[5]	[5]	[5]	[5]	[5]	[5]	[5]	[5]	[5]	[5]
[6]	[6]	[6]	[6]	[6]	[6]	[6]	[6]	[6]	[6]
[7]	[7]	[7]	[7]	[7]	[7]	[7]	[7]	[7]	[7]
[8]	[8]	[8]	[8]	[8]	[8]	[8]	[8]	[8]	[8]
[9]	[9]	[9]	[9]	[9]	[9]	[9]	[9]	[9]	[9]

CENTRE NUMBER				
7	7	2	3	4
[0]	[0]	[0]	[0]	[0]
[1]	[1]	[1]	[1]	[1]
[2]	[2]	[2]	[2]	[2]
[3]	[3]	[3]	[3]	[3]
[4]	[4]	[4]	[4]	[4]
[5]	[5]	[5]	[5]	[5]
[6]	[6]	[6]	[6]	[6]
[7]	[7]	[7]	[7]	[7]
[8]	[8]	[8]	[8]	[8]
[9]	[9]	[9]	[9]	[9]

PAPER CODE			
0	2	2	1
[0]	[0]	[0]	[0]
[1]	[1]	[1]	[1]
[2]	[2]	[2]	[2]
[3]	[3]	[3]	[3]
[4]	[4]	[4]	[4]
[5]	[5]	[5]	[5]
[6]	[6]	[6]	[6]
[7]	[7]	[7]	[7]
[8]	[8]	[8]	[8]
[9]	[9]	[9]	[9]

For Supervisors only.

If candidate is absent shade this space.



Answer **all** questions in this section.

Each question is followed by **four** options lettered A to D. Find the **correct** option for **each** question and shade in **pencil** on your answer sheet the answer space which bears the same letter as the option you have chosen. Give **only one** answer to **each** question. An example is given below

The last book of the Bible is

- A. The Gospel according to St. John.
- B. The Epistle to the Romans.
- C. The Revelation of St. John.
- D. The Epistle of Jude.

The correct answer is 'The Revelation of St. John' which is lettered **C** and therefore answer space **C** would be shaded.

[ A ]                      [ B ]                      [ ~~C~~ ]                      [ D ]

Think carefully before you shade the answer spaces: erase completely any answer you wish to change.

Do all rough work on this question paper. Now answer the following questions

1. The most significant sign of puberty among girls is the
  - A. development of breast
  - B. beginning of menstruation
  - C. growth of pubic hair
  - D. broadening of hips
2. The cutlass given to a boy at puberty signifies
  - A. acceptance into the military sect
  - B. bravery and courage
  - C. readiness to defend the community
  - D. working to maintain himself and the family
3. In traditional religion, burying the dead with personal belongings signifies that
  - A. there is life after death
  - B. items are sent to the spiritual world
  - C. the dead pay for their journey
  - D. there is hunger in the spiritual world
4. The three main religions in Ghana believe in
  - A. ancestors and witches
  - B. holy scriptures
  - C. angels and smaller gods
  - D. the supreme being
5. Christians, Muslims and Traditional worshippers believe that the world was created by
  - A. man
  - B. an angel
  - C. the Holy Spirit
  - D. God
6. Which of the following religious practices is observed by the three major religions in Ghana?
  - A. Ancestral worship
  - B. Animal sacrifice
  - C. Charity
  - D. Fasting
7. By creating Adam and Eve, God was establishing the institution of
  - A. comportment
  - B. brotherliness
  - C. friendship
  - D. marriage
8. The effect of Adam and Eve eating from the forbidden tree was the
  - A. beginning of enmity between themselves
  - B. cursing of snakes by Adam
  - C. origin of separation between man and God
  - D. establishment of a better relationship between them and God
9. When God told man to till the land, He meant man must
  - A. be courageous
  - B. work hard
  - C. enjoy life
  - D. control the land
10. Undergoing puberty rites is important because it
  - A. makes one acceptable in the community
  - B. identifies one with the ancestors
  - C. helps one to acquire wealth
  - D. promotes a chaste life

11. All religions teach that humans should be stewards of the earth and
- farm on it
  - build on it
  - care for it
  - make it fertile
12. In the book of Genesis, the world was created in
- 3 days
  - 5 days
  - 6 days
  - 7 days
13. The most important rite in an Islamic marriage is the
- presentation of household utensils to the bride
  - delivery of the wedding sermon during the feast
  - payment of the dowry
  - celebration of the marriage feast
14. In the traditional society, rites of passage involve a
- transition from death to become an ancestor
  - life cycle from one stage to another
  - transition from death to reincarnation
  - period of death and resurrection
15. The water and wine or gin given to the child during the naming ceremony signifies
- loyalty
  - faithfulness
  - truthfulness
  - respect
16. The importance of naming ceremony is to
- announce that a woman has delivered
  - make the society aware
  - ask for future suitors for the child
  - give the child an identity
17. Which of the following is considered when choosing a name for a newborn child?
- The weight of the child
  - Tribe of the parents
  - Age of the mother
  - The baby's place of birth
18. According to the Holy Bible, the first thing created was
- darkness
  - light
  - plant
  - land
19. In the traditional society, people with good character perform the naming ceremony because it is believed that
- they will be rewarded
  - the child will follow their footsteps
  - they will help the parents of the child
  - it's their duty to make sure the child is named
20. The traditional belief that the child needs no one to show him God means
- God is with the child
  - the child knows God
  - the child talks to God
  - God exists
21. Most Ghanaians name their children after their ancestors. This act reveals their belief in
- childbirth
  - destiny
  - reincarnation
  - spiritual power
22. The Ga people introduce the child to rain and earth during the outdoor ceremony by
- putting the child on the ground three times
  - lifting the child to the sky three times
  - pouring corn-wine libation to ancestors
  - throwing water on the roof to trickle onto the child
23. Man was the last creation of God because God wanted him to
- be satisfied with all that he would
  - verify things he created
  - help him name the creatures
  - produce and fill the earth
24. Muslims believe that God created rain in order to
- give us the roof
  - make a mighty wind
  - sustain plants and animals
  - cool the sun
25. According to Christian teachings, God created man and woman on the
- 1st day
  - 2nd day
  - 3rd day
  - 6th day

26. Why did Adam describe Eve as a woman?
- She was the mother of all living things
  - She was created from his rib
  - She allowed the serpent to deceive her
  - She was made as a helper suitable for him
27. A lesson from the fall of man is that we should
- continue to do good
  - take instructions from people
  - be obedient to our leaders
  - love all equally
28. Which religion believes that God moved from the earth because of the activities of mankind?
- Traditional
  - Christianity
  - Islam
  - Hinduism
29. By creating the world from one stage to another, God wanted humankind to do things in
- a hurried way
  - an official way
  - a comfortable way
  - an orderly way
30. God commanded the earth to produce plants on the
- second day
  - third day
  - fourth day
  - fifth day
31. In the creation story, God created Adam to
- subdue and till the earth
  - take good care of Eve
  - worship him regularly
  - eats all the fruit in the garden
32. Islam recommends early marriage and child betrothal in order to
- avoid moral slips
  - prevent child abuse
  - receive a reward from Allah
  - promote polygamy
33. All the following things make marriage successful except
- faithfulness
  - hard work
  - mutual respect
  - educational background
34. The burial of a piece of hair, fingernails and toenails of a corpse at his hometown signifies that
- there is life after death
  - the spirit has contact with the living
  - lesser gods want the spirit
  - everyone must be buried in the home town
35. The important thing about performing funeral rites is that it
- helps the dead to join the ancestors
  - avoids more death in the family
  - opens the way for the dead to go to heaven
  - enables the dead to resurrect
36. It is believed that burying the dead with money helps him to
- pay his debtors in the spiritual world
  - pay for his fare to cross the river to another world
  - pay the ancestors for welcoming him
  - take care of his needs
37. Mourners from the cemetery wash their hands before entering the funeral house again to
- break relations with the dead
  - show that they are among the living
  - announce their return from the cemetery
  - cleanse themselves from any curse
38. Unhappiness in marriage occurs when couples
- are from the same background
  - pursue personal interests
  - share similar values and ideas
  - accept each other's family
39. The growth of pubic hair is a sign of
- motherhood
  - pregnancy
  - puberty
  - respect
40. The most important prayer request during marriage rites is for
- prosperity and wealth
  - protection and long life
  - good health and protection
  - long life and children

<p><b>END OF FIRST TERM EXAMINATION</b>  December  <b>CREATIVE ARTS AND DESIGN 2 &amp; 1</b>  Essay and Objective  2 hours 5 minutes</p>	<b>2 &amp; 1</b>
--	------------------

Name: .....

Index Number: .....

Candidate's Signature : .....

Date of Examination: .....

## ONE VISION EXAMINATIONS CENTRE (OVEC)

### END OF FIRST TERM EXAMINATION

December                                      **CREATIVE ARTS AND DESIGN 2 & 1**                                      **2 hours 5 minutes**

[100 marks]

#### BASIC 8

Write your **name, index number, date of examination and sign in ink** in the spaces provided above.

This booklet consists of two papers. Paper **2** is in three sections: **A, B** and **C**. Answer **four** questions only: Two questions in section **A** using the spaces provided in this question paper. **One** question **each** from section **B** and **C** to be answered in the **answer booklet** provided. Paper **2** will last 1 hour 15 minutes.

Do not start Paper **1** until you are told to do so. Paper **1** will last 50 minutes. Answer Paper **1** on your Objective Test answer sheet.

At the end of the examination, you should submit the **entire** question paper and answer booklet to the invigilator.

Any candidate who tears off **any** part of this question paper will be **severely** penalized.

Whether you answer all the questions in this paper or not, hand in the **entire** question paper to the invigilator.

Credit will be given for expression and orderly presentation of materials.

<b>CREATIVE ARTS AND DESIGN</b>	
<b>For Examiner Use Only</b>	
<b>Question Number</b>	<b>Mark</b>
<b>TOTAL</b>	

**PAPER 2  
ESSAY**

**1 hour 15 minutes**

**[60 marks]**

Answer **four** questions **only**.  
All the questions carry equal marks.

**SECTION A  
(VISUAL ART)**

**[30 marks]**

Answer **two** questions **only** from this section, question **1** and **any** other.

1. (a) In the spaces provided below, draw the outline of a cup and a balloon. Shade them with lines and dots, respectively.



- (b) Name the three secondary colours of pigment that can be used to colour the object drawn. **[12 marks]**

.....  
.....  
.....

**[3 marks]**

2. (a) A Creative Arts and Design teacher assigned the class to produce the following artworks intended to educate learners. State one appropriate technique that you would use to produce each of them.

- i. Poster : .....
- ii. Mural : .....
- iii. Wall hanging : .....
- iv. Waste container : .....
- v. Banner : .....

**[5 marks]**

- (b) In an orderly manner, rearrange the following design processes to follow the right procedure.

- i. Prototype or possible solution.
- ii. Idea development.
- iii. Identifying needs.
- iv. Final presentation and delivery.
- v. Defining problem with brief.
- vi. Ideation or information gathering.

.....  
.....  
.....  
.....  
.....  
.....

(c) Explain texture as a design element and give the two types of texture. **[6 marks]**

.....  
.....  
.....

**[4 marks]**

3. (a) Afua used the following colours in making a wall design. State one meaning of each of the following colours.

- i. White : .....
- ii. Green : .....
- iii. Violet : .....
- iv. Black : .....
- v. Blue : .....

**[5 marks]**

(b) A fun club intend to embark on an annual rally. They have therefore decided to print new cloth for the rally.

- i. List three wet media that would be useful for the printing of the cloth.

.....  
.....  
.....

**[3 marks]**

- ii. How would you explain mono printing?

.....  
.....  
.....

**[3 marks]**

(c) State the main use of the following tools in designing.

- i. Palette : .....
- ii. Spray diffuser : .....

**[4 marks]**

**SECTION B  
(MUSIC)  
[15 marks]**

*Answer only **one** question from this section.*

*All answers should be written in the answer booklet provided. Candidates who want to answer question **5** should request for a **manuscript** from the supervisor.*

4. (a) Copy and complete the table by stating the number of beats of the following musical notes.

Note	Number of beats
Crochet	
Minim	
Semi breve	
Breve	
Quaver	

**[5 marks]**

- (b) How can listening to loud music affect your health? Give three negative effects of loud music.

**[6 marks]**

- (c) State the meaning of the following terms:

- i. Lento;
- ii. Largo;
- iii. Allegro;
- iv. Poco a poco.

**[4 marks]**

5. (a) Define the following terms as used in music:

- i. Tempo;
- ii. Dynamics.

**[5 marks]**

- (b) Using the music manuscript provided, draw a treble clef and indicate ascending and descending scales using whole notes.

**[6 marks]**

- (c) Give two duties of a music director during a musical performance.

**[4 marks]**

**SECTION C  
(DANCE AND DRAMA)  
[15 marks]**

*Answer **only one** question from this section.  
All answers should be written in the answer booklet provided.*

6. (a) Group the following under the types of dances listed below.  
**Boboorbor, Akom, Atsiagbekor, Bawaa, Kete**
- i. Religious dance;
  - ii. Occupational dance;
  - iii. Commemorative dance;
  - iv. Status and identity dance;
  - v. Recreational dance. **[5 marks]**
- (b) Give four reasons why it is necessary to exhibit dance to the general public. **[6 marks]**
- (c) State the music genre that the following Ghanaian musicians are noted for:
- i. Sarkodie;
  - ii. Agya Koo Nimo;
  - iii. Ephraim Amu;
  - iv. Diana Hamilton. **[4 marks]**
7. (a) A foreign student wants to conduct research into Ghanaian dance forms and styles.
- i. List three different occasions where Ghanaian dance he can observe Ghanaian dance. **[3 marks]**
  - ii. Give four examples of dance gestures he would likely observe. **[4 marks]**
- (b) Mention four forms of performed arts that have made a positive impact on Ghanaian society. **[4 marks]**
- (c) Why do dance performers involve enough energy in their performance? Give two reasons. **[4 marks]**

**END OF ESSAY TEST**

**BASIC 8**

**CREATIVE ARTS AND DESIGN 1**

**DO NOT TURN OVER THIS PAGE  
UNTIL YOU ARE TOLD TO DO SO.**

**YOU WILL BE PENALIZED SEVERELY IF YOU ARE  
FOUND LOOKING AT THE NEXT PAGE BEFORE  
YOU ARE TOLD TO DO SO.**

Answer **all** questions in this section.

Each question is followed by **four** options lettered A to D. Find the **correct** option for **each** question and shade in **pencil** on your answer sheet the answer space which bears the same letter as the option you have chosen. Give only **one** answer to **each** question. An example is given below

Tools are oiled after use to

- A. ensure they remain accurate.
- B. prevent them from rusting.
- C. preserve the cutting edges.
- D. maintain their attractiveness.

The correct answer is 'prevent them from rusting' which is lettered B and therefore answer space B would be shaded.

[ A ]                      [ ~~B~~ ]                      [ C ]                      [ D ]

Think carefully before you shade the answer spaces: erase completely **any** answer you wish to change.

Do all rough work on this question paper. Now answer the following questions

1. Videos of short performances of a play on social media are all called
  - A. elegy
  - B. series
  - C. skits
  - D. gestures
2. Ama wore a necklace, shakers and an amulet for the Adowa dance. These items are referred to as
  - A. site
  - B. jersey
  - C. uniform
  - D. costume
3. Select a quality that cannot be used for describing the nature of a surface to an individual.
  - A. Coarse
  - B. Gritty
  - C. Furry
  - D. Wild
4. Two faces of 3D objects meet to create one of the following.
  - A. Vertex
  - B. Area
  - C. Edge
  - D. Symmetry
5. In a music class, which of the following can be identified as a chordophone?
  - A. Violin
  - B. Trumpet
  - C. Flute
  - D. Drum
6. How many beats does a breve have in music?
  - A. 1
  - B. 2
  - C. 4
  - D. 8
7. The culture of the people of Ghana can be shown at the following events, except
  - A. independence-day celebration
  - B. royal funeral
  - C. civil wars
  - D. child outdoorings
8. Recreational dance is performed for the following reasons, except for
  - A. making people anxious about scenes
  - B. creating fun and comfort
  - C. enhancing social cohesion
  - D. making people relax and meditate
9. Songs with a high tempo are those played at
  - A. slow sound
  - B. quick speed
  - C. easy styles
  - D. joyous scenes
10. When drummers and dancers are performing, the stage used could also be termed as
  - A. space
  - B. outside
  - C. direction
  - D. floor

11. Which element of design could be associated with the human eye?  
 A. Texture  
 B. Dot  
 C. Harmony  
 D. Line
12. Fabrics are created through the following processes, except  
 A. crocheting  
 B. slabbing  
 C. weaving  
 D. knitting
13. A xylophone is an indigenous Ghanaian instrument used mostly among  
 A. Frafras  
 B. Asantes  
 C. Fantas  
 D. Nzemas
14. The usefulness of a designed item is noted as its  
 A. functions  
 B. origin  
 C. cost  
 D. expenses
15. All the following are digital applications used in drawing and colouring, except  
 A. Corel Draw  
 B. Adobe Photoshop  
 C. Microsoft Paint  
 D. Microsoft Excel
16. Akua wants to mix yellow and blue colour pigments. Which colour would he likely produce?  
 A. Orange  
 B. Cyan  
 C. Green  
 D. Violet
17. Mr. Amuzu makes statues for companies. This means he is a  
 A. welder  
 B. poet  
 C. sculptor  
 D. painter
18. "Yen ara asaase ni" is an indigenous Ghanaian Song which signifies  
 A. entertainment  
 B. patriotism  
 C. war  
 D. harvest
19. Which of the following is not a use of a design work?  
 A. To solve societal problems  
 B. It keeps us connected to the world  
 C. It helps with goods pricing and sales  
 D. To homes and offices beautiful
20. The ability of an individual to imagine to make something new can be termed as  
 A. creativity  
 B. ambition  
 C. objectivity  
 D. risk-taking
21. A planned repetition of lines, dots and shapes on a drawing surface creates a  
 A. framework  
 B. principle  
 C. pattern  
 D. design
22. All drawings and paintings can be grouped under  
 A. landscape drawing  
 B. still life drawing  
 C. isometric drawing  
 D. graphic gesturing
23. A common tool used in sculptural modelling is  
 A. burner  
 B. mould box  
 C. chisel  
 D. palette
24. An anthill is a natural form which has inspired the making of a  
 A. book shelves  
 B. storey building  
 C. flying airplane  
 D. mould block
25. Which of the following is a man-made element?  
 A. Cobweb  
 B. Human hair  
 C. Leaf vein  
 D. Metal bowl

26. A Creative Arts student wants to draw a line which is inconsistent and unstable. Which line is suitable?
- Wavy line
  - Diagonal line
  - Spiral line
  - Vertical line
27. During demonstrations and disturbances, people put on
- red attires
  - orange clothes
  - yellow bands
  - green outfits
28. A girl wants to identify a 3D object at home. Which of the following is suitable?
- Plastic tray
  - Refrigerator
  - Metal fork
  - Sheet of paper
29. A Ghanaian dance, considered a recreational dance, is
- Adowa
  - Borborbor
  - Atsiagbekor
  - Gome
30. The culture of a group of people can be learnt by studying their
- meal service
  - road accident
  - environmental status
  - domestic incomes
31. During a dance performance, the body is moved to a music
- timing
  - pattern
  - rhythm
  - stage
32. Abigail and Afronita are well-known in the Creative Arts industry as
- singers
  - dancers
  - poets
  - playwrights
33. Bringing different forms of elements together to create a single pattern suggests which design principle?
- Scale
  - Unity
  - Dominance
  - Contrast
34. Identify from the options given, an example of an art form which has no characters
- drama
  - music
  - visual art
  - choreography
35. A package is an important product. For it to attract children, it has to be
- colourful
  - dented
  - durable
  - exceptional
36. Circular representation of colours to show how they relate is known as colour
- spectrum
  - wheel
  - formation
  - phases
37. Five parallel lines with four spaces in music repeated on a sheet of paper form a musical
- subscript
  - superscript
  - manuscript
  - duo-script
38. A mural is a large visual artwork of painting made usually on
- floors
  - walls
  - tree backs
  - fabrics
39. An artist creates a series of paintings that tell a story. The artist's style of painting is associated with
- abstract art
  - decorative art
  - narrative art
  - representative art
40. Both dance and drama have
- lyrics
  - pitches
  - characters
  - sounds

**END OF PAPER**

<b>END OF FIRST TERM EXAMINATION</b>	
December	
<b>CAREER TECHNOLOGY 2 &amp; 1</b>	<b>2 &amp; 1</b>
Essay and Objective	
2 hours 5 minutes	

Name: .....

Index Number: .....

Candidate's Signature : .....

Date of Examination: .....

## ONE VISION EXAMINATIONS CENTRE (OVEC)

### END OF FIRST TERM EXAMINATION

December **CAREER TECHNOLOGY 2 & 1** **2 hours 5 minutes**

[100 marks]

#### BASIC 8

Write your **name, index number, date of examination and sign in ink** in the spaces provided above.

This booklet consists of two papers. Paper **2** is in two sections: **A** and **B**. Answer **four** questions only: Two questions in section **A** using the spaces provided in this question paper. **Two** questions from section **B** to be answered in the **answer booklet** provided. Paper **2** will last 1 hour 15 minutes.

Do not start Paper **1** until you are told to do so. Paper **1** will last 50 minutes. Answer Paper **1** on your Objective Test answer sheet.

At the end of the examination, you should submit the **entire** question paper and answer booklet to the invigilator.

Any candidate who tears off **any** part of this question paper will be **severely** penalized.

Whether you answer all the questions in this paper or not, hand in the **entire** question paper to the invigilator.

Credit will be given for expression and orderly presentation of materials.

<b>CAREER TECHNOLOGY</b>	
<b>For Examiner Use Only</b>	
<b>Question Number</b>	<b>Mark</b>
<b>TOTAL</b>	

ESSAY

PART A

[30 marks]

Answer Question 1 [Compulsory] and any other one question.

1. (a) Maame Ama is boiling rice for her family supper. It will be served with fish palava sauce.

i. In six steps, describe how the plain rice is boiled.

.....

.....

.....

.....

.....

.....

[6 marks]

ii. What are the advantages of boiling as a cooking method? Give three of them.

.....

.....

.....

[3 marks]

(b) Give two reasons for clearing and washing up of utensils in the food laboratory after the day's work.

.....

.....

[3 marks]

(c) Explain hygiene.

.....

.....

.....

[3 marks]

2. (a) A Career Technology student was asked to use threads made from natural fibre to weave a cloth.

i. List four natural fibres that can be used.

.....

.....

.....

.....

[4 marks]

ii. Give four general properties of natural fibres.

.....  
.....  
.....  
.....

(b) State four processes used in making fabrics/textiles.

**[4 marks]**

.....  
.....  
.....  
.....

(c) In making a boy's school uniform, list three materials that can be used.

**[4 marks]**

.....  
.....  
.....

3. (a) Shafatu was advised to consume more body-building foods by a medical doctor after recovering from severe malaria.

i. List five bodybuilding foods she can consume.

.....  
.....  
.....  
.....  
.....

ii. What is the main nutrient the body gets from bodybuilding foods?

**[5 marks]**

.....  
.....

iii. State two functions of body-building foods.

**[2 marks]**

(b) A mother prepared brown beef stew for her son's birthday party. List any four ingredients she will use.

**[4 marks]**

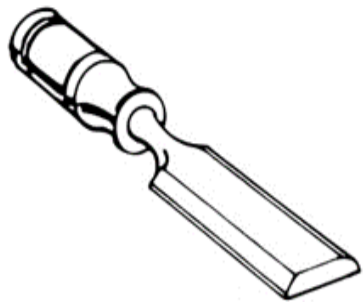
.....  
.....  
.....

**PART B**

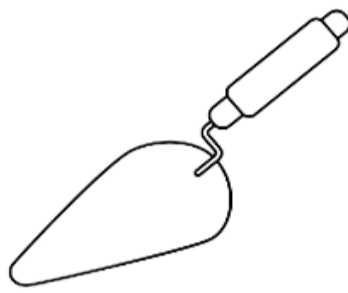
**[30 marks]**

Answer Question 4 [Compulsory] and any other one question.

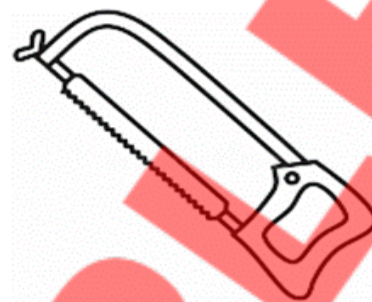
4. Study the tools displayed below and answer the questions that follow.



**I**



**II**



**III**

(a) Name each of the tools displayed as I, II and III. **[3 marks]**

(b) Give one use of each of the tools. **[6 marks]**

(c) State the site/workshop where each of the tools above is used. **[3 marks]**

(d) Why would workers carry out the following activities on the tools displayed?

i. Oiling metallic parts after use

ii. Sharpening cutting edges **[3 marks]**

5. (a) Copy and complete the table by grouping the materials under the appropriate type of materials.

*Fibre optics, Plastic, Card, Graphene, Polymorph, Fabric, Glass.*

<b>Compliant</b>	<b>Resistant</b>	<b>Smart and modern</b>

**[7 marks]**

(b) Briefly explain the following properties of compliant materials:

i. Stiffness;

ii. Absorbency. **[4 marks]**

(c) A boy is drawing 3D objects on a drawing paper. Give four tools used in carrying out the design. **[4 marks]**

6. (a) i. Explain what is meant by finishing. **[3 marks]**

ii. Give three examples of finishes that can be used on wooden, metal and building forms. **[3 marks]**

(b) Give four safety precautions students can observe in wood and metal workshops. **[6 marks]**

(c) Give three areas where smart and modern materials are used. **[3 marks]**

**END OF ESSAY TEST**

# DO NOT TURN OVER THIS PAGE UNTIL YOU ARE TOLD TO DO SO.

**YOU WILL BE PENALIZED SEVERELY IF YOU ARE  
FOUND LOOKING AT THE NEXT PAGE BEFORE  
YOU ARE TOLD TO DO SO.**

## BASIC 8

PAPER 1

50 minutes

### OBJECTIVE TEST

Answer all questions on your Objective Test answer sheet.

1. Use **2B** pencil throughout.
2. On the pre-printed answer sheet, check that the following details are **correctly** printed: Your **surname** followed by **other names**, the *Subject Name*, your *Index Number*, *Centre Number* and the *Paper Code*.
3. In the boxes marked *Candidate Number*, *Centre Number* and *Paper Code*, **reshade** each of the shaded spaces.
4. An example is given below. This is for a female candidate whose name is Janet OWUSU, Her *Index Number* is **772384188** and she is writing the examination at Centre Number **77234**. She is offering **Career Technology 1** and the Paper Code is **0531**.

ONE VISION EXAMINATIONS CENTRE (OVEC)  
BASIC EDUCATION TERMINAL EDUCATION  
**OBJECTIVE ANSWER SHEET**

<b>CANDIDATE NAME:</b> OWUSU JANET	<b>SUBJECT NAME:</b> CAREER TECHNOLOGY 1
---------------------------------------	---

- |  |  |
|--|--|
| <ol style="list-style-type: none"> <li>1. Use 2B pencil. Press firmly.</li> <li>2. Answer question by choosing one letter and then, shade through the letter chosen like this<br/>[A] [B] [C] [D] [E]</li> <li>3. If you want to change an answer, rub out your</li> </ol> | <ol style="list-style-type: none"> <li>first mark completely.</li> <li>4. If only four alternatives answers are given for each question, ignore the letter E</li> <li>5. Your question paper may have fewer than 100 questions.</li> </ol> |
|--|--|

CANDIDATE NUMBER									
7	7	2	3	8	4	1	8	8	
[0]	[0]	[0]	[0]	[0]	[0]	[0]	[0]	[0]	[0]
[1]	[1]	[1]	[1]	[1]	[1]	[1]	[1]	[1]	[1]
[2]	[2]	[2]	[2]	[2]	[2]	[2]	[2]	[2]	[2]
[3]	[3]	[3]	[3]	[3]	[3]	[3]	[3]	[3]	[3]
[4]	[4]	[4]	[4]	[4]	[4]	[4]	[4]	[4]	[4]
[5]	[5]	[5]	[5]	[5]	[5]	[5]	[5]	[5]	[5]
[6]	[6]	[6]	[6]	[6]	[6]	[6]	[6]	[6]	[6]
[7]	[7]	[7]	[7]	[7]	[7]	[7]	[7]	[7]	[7]
[8]	[8]	[8]	[8]	[8]	[8]	[8]	[8]	[8]	[8]
[9]	[9]	[9]	[9]	[9]	[9]	[9]	[9]	[9]	[9]

CENTRE NUMBER				
7	7	2	3	4
[0]	[0]	[0]	[0]	[0]
[1]	[1]	[1]	[1]	[1]
[2]	[2]	[2]	[2]	[2]
[3]	[3]	[3]	[3]	[3]
[4]	[4]	[4]	[4]	[4]
[5]	[5]	[5]	[5]	[5]
[6]	[6]	[6]	[6]	[6]
[7]	[7]	[7]	[7]	[7]
[8]	[8]	[8]	[8]	[8]
[9]	[9]	[9]	[9]	[9]

PAPER CODE			
0	5	3	1
[0]	[0]	[0]	[0]
[1]	[1]	[1]	[1]
[2]	[2]	[2]	[2]
[3]	[3]	[3]	[3]
[4]	[4]	[4]	[4]
[5]	[5]	[5]	[5]
[6]	[6]	[6]	[6]
[7]	[7]	[7]	[7]
[8]	[8]	[8]	[8]
[9]	[9]	[9]	[9]

For Supervisors only.

If candidate is absent shade this space.



Answer **all** questions in this section.

Each question is followed by **four** options lettered A to D. Find the **correct** option for **each** question and shade in **pencil** on your answer sheet the answer space which bears the same letter as the option you have chosen. Give only **one** answer to **each** question. An example is given below

Tools are oiled after use to

- A. ensure they remain accurate.
- B. prevent them from rusting.
- C. preserve the cutting edges.
- D. maintain their attractiveness.

The correct answer is 'prevent them from rusting' which is lettered B and therefore answer space B would be shaded.

[ A ]                      [ ~~B~~ ]                      [ C ]                      [ D ]

Think carefully before you shade the answer spaces: erase completely **any** answer you wish to change.

Do all rough work on this question paper. Now answer the following questions

1. A mason needs the following to make concrete. What would not be considered?
  - A. Sand
  - B. Laterite
  - C. Stones
  - D. Cement
2. The proper arrangement of kitchen essentials in a food laboratory helps Ama to
  - A. prevent accidents
  - B. manage fatigue
  - C. tidy up on time
  - D. reduce food bulkiness
3. Emptying dustbins **daily** and wiping wet floors **helps** in ensuring
  - A. food hygiene
  - B. personal hygiene
  - C. oral hygiene
  - D. kitchen hygiene
4. Accidents **occur** in workshops for the following **reasons** except
  - A. **lack** of **enough** fuel
  - B. **too much** workload
  - C. **wrong** tool usage
  - D. **slippery** floors
5. Tough meat and hides are cut into **smaller** pieces using a
  - A. filleting knife
  - B. boning knife
  - C. serrated knife
  - D. meat mincer
6. The method used to prevent rust from metal surfaces is
  - A. coating
  - B. sharpening
  - C. welding
  - D. seasoning
7. Materials with consistent and **flexible** properties are said to be
  - A. compliant
  - B. modern
  - C. resistant
  - D. modern
8. Sanitized fabrics used by industries in making sportswear and socks are grouped under
  - A. smart and modern materials
  - B. durable and reusable materials
  - C. compliant material
  - D. resistant materials
9. The most appropriate tool for cutting metal pipes into pieces is
  - A. tenon saw
  - B. hacksaw
  - C. rip saw
  - D. crosscut saw
10. On a drawing paper, one can best draw a horizontal line with a
  - A. pair of compasses
  - B. protractor
  - C. set square
  - D. tee square
11. Why would a dressmaker take accurate measurements of various parts of a girl before making a dress for her?
  - A. To avoid waste of material
  - B. To improve surface quality
  - C. To obtain a nice shape
  - D. To develop lasting clothes

12. Fibre is twisted to make threads, also threads are woven to make
- garments
  - fabrics
  - yarns
  - polyester
13. Movable metallic parts of a machine are best maintained by
- scratching
  - brushing
  - wearing off
  - greasing
14. The following items are used when assembling parts of a design, except
- white glue
  - screw driver
  - wood ash
  - soldering bit
15. Kitchen essentials are made from the following materials in our environment, except
- ceramics
  - wood
  - cardboard
  - stainless steel
16. A major equipment used to remove creases from a cotton fabric is
- pressing iron
  - sewing machine
  - pair of scissors
  - dummy
17. Three-dimensional shapes with a uniform cross-section exclude
- cube
  - cone
  - cylinder
  - cuboid
18. The ability of a resistant material to allow heat to pass through it easily is
- conductivity
  - malleability
  - ductility
  - density
19. In building construction, loads are supported to prevent collapse by building strong
- torsions
  - structures
  - balances
  - panels
20. When is it necessary to use a face shield?
- During the production of bottled water
  - When reading and applying safety rules
  - During a class instructional period
  - When handling chemicals that can splash
21. A career technology student wants to firmly join the two ends of a cast iron pipe together. What process would be used?
- Welding
  - Fabrication
  - Mending
  - Assemblage
22. Which of these is not an advantage of being an entrepreneur?
- Regular income
  - Independence
  - Self-management
  - Job creation
23. The following sewing items can be associated with a line except
- interlacing
  - band
  - string
  - button
24. When setting up a sewing business, Araba would consider the following factors except
- equipment needed
  - start-up capital
  - good location
  - loss margin
25. Wearing tight synthetic fabrics could lead to body odour by trapping sweat and creating an environment
- easy to kill germs
  - with bad air waves and light
  - conductive for bacterial growth
  - attractive to rodents and pests

26. A good practice in the food laboratory is
- emptying water containers
  - scrubbing walls weekly
  - storing leftover foods well
  - leaving dustbins open
27. When dressing a fresh wound, the following items are needed except
- cotton wool
  - scissors
  - surgical blade
  - gentian violet
28. A teenager who wants to prevent bad body odour must use
- lime and deodorant
  - fine sand and perfume
  - lemon and olive oil
  - pomade and hand sanitizer
29. The first step in giving first aid is to
- send the victim to the hospital
  - take safety items from the first aid box
  - take off the victim's dress
  - relax the victim of the accident
30. One advantage of using charcoal as a fuel for cooking is that it is
- quite hard to break
  - clean to use
  - a cheap source of fuel
  - good for cooking tubers
31. A chef intends to drain off oil from fried food. Which kitchen essential could be used?
- Wooden fork
  - Colander
  - Strainer
  - Cook's knife
32. A food commodity that provides manual workers with enough energy is
- cocoyam
  - passion fruit
  - chicken fat
  - cow milk
33. We consume food for the following reasons except
- to gain energy for work
  - for worn-out tissues repair
  - to maintain fresh skin
  - ensuring body development
34. Blenders and fryers are mechanical kitchen essentials because they
- require manual operation
  - are large and easy to operate
  - are portable and efficient
  - work with electricity
35. The use of nanotechnology in food packaging
- improves food taste
  - increase the shelf life of food
  - reduces antimicrobial properties
  - makes food more hardened
36. Compliant materials like paper and card used have the following properties except
- colour
  - density
  - viscosity
  - balance
37. Which of the following designing processes is carried out first?
- Cutting
  - Marking out
  - Assembling
  - Drilling in
38. Which of the following affects the mental health of a student?
- Depression
  - Idleness
  - Overconfidence
  - Talking too much
39. Soft, tiny hair-like strands for making fabrics are called
- folate
  - filtrate
  - fibre
  - foam
40. Which of the following are physical properties of paper?
- Density and colour
  - Viscosity and bonding
  - Porosity and opacity
  - Folding endurance

**END OF PAPER**

<b>END OF FIRST TERM EXAMINATION</b>	
December	<b>2 &amp; 1</b>
<b>COMPUTING 2 &amp; 1</b>	
Essay and Objective	
2 hours	

Name: .....

Index Number: .....

Signature : .....

Date of Examination: .....

## ONE VISION EXAMINATIONS CENTRE (OVEC)

### END OF FIRST TERM EXAMINATION

December

**COMPUTING 2 & 1**

**2 hours**

Essay and Objective

**BASIC 8**

Do **not** open this booklet until you are told to do so. While you are waiting, read and observe the following instructions carefully. Write your **name, index number, signature** and **date of examination** in **ink** in the spaces provided above.

This booklet consists of **two** parts. Answer Paper 2 which comes first, in the booklet and Paper 1 on the Objective Test answer sheet. Paper 2 will last **1 hour 15 minutes**. Do **not** start paper 1 until you are told to do so. Paper 1 will last **45 minutes**. At the end of the examination, submit the **entire** question paper to the invigilator.

Any candidate who tears off any part of the question paper will be **severely** panelized.

Whether you answer all the questions in this paper or not, hand **entire** question paper to the invigilator.

<b>COMPUTING</b>	
<b>For Examiner Use Only</b>	
<b>Question Number</b>	<b>Mark</b>
<b>TOTAL</b>	

**PAPER 2: ESSAY**

$1\frac{1}{4}$  hours

This paper consists of **two** sections: **A** and **B**. Answer question **1** in section **A** and any other **three** questions in section **B**. All questions carry **equal marks**. Answer **all** the questions in the **spaces** provided in this question paper.

SECTION A

[24 marks]

Answer Question **1 (compulsory)**

1. (a) The diagram below illustrates an MS Word document featuring tables that outline a specific family’s food routine. Use it to answer the questions that follow:

DAYS	TIMES OF THE DAY		
	MORNING	AFTERNOON	EVENING
Monday	Rice pudding	Ampesi	Fufu
Tuesday	Tom brown	Tuo Zaafi	Jollof rice
Wednesday	Hausa Koko	Waakye	Jollof rice
Thursday	Oats	Banku	Rice balls
Friday	Milo	Rice and Stew	Apapransa

- i. Outline the processes involved used in inserting the table into the Word document.

.....

.....

.....

.....

[4 marks]

- ii. Describe how the meals planned for Tuesday and Wednesday evenings were combined into a single menu.

.....

.....

.....

[3 marks]

- iii. Outline the steps to insert a header at the top of the document with the text 'Family Food Routine'.

.....

.....

.....

.....

.....

[5 marks]

(b) Mention four examples of data entry devices.

.....  
.....  
.....

(c) Explain the importance of carrying out defragmentation on your hard drive. **[4 marks]**

.....  
.....

(d) Outline three advantages of Hybrid Hard Drives for the computer system. **[2 marks]**

.....  
.....

(e) The Bank of Ghana wants to use quantum computing to detect fraud in mobile money transactions instantly. How can this technology help? **[3 marks]**

.....  
.....

**[3 marks]**

**SECTION B**  
**[36 MARKS]**

Answer **three** questions only from this section.

2. Elvis is a Junior High School student in Accra who lost part of his vision after an illness. His school recently received new computers from the Ministry of Education. The ICT teacher wants to make sure Elvis can also use the computers effectively. She installs screen reader software that reads out text on the screen, and increases the font size so Elvis can see better. The teacher has exhibited adaptive technologies so that Elvis can type more easily.

(a) Explain adaptive technologies.

.....  
.....  
.....

(b) Mention five other adaptive technologies used by people with special needs. **[3 marks]**

.....  
.....  
.....

(c) Printers can be broadly classified into two categories: impact and non-impact printers. What are the differences between these two types?

.....  
.....  
.....

**[4 marks]**

3. (a) Explain portable computing device and state two examples.

.....  
.....  
.....  
.....

**[4 marks]**

(b) Suggest three safety measures one should follow to reduce health risk at the workstation.

.....  
.....

**[3 marks]**

(c) State the difference between HDD and SSD.

.....  
.....

**[2 marks]**

(d) Examine three reasons why people blog.

.....  
.....

**[3 marks]**

4. (a) Mr. Hackman is looking for ways to engage with students outside the classroom. Suggest two reasons why using social media platforms will be more appropriate for Mr. Hackman.

.....  
.....

**[4 marks]**

(b) Write four examples of social media platforms.

.....  
.....  
.....

**[4 marks]**

(c) Differentiate between quantum computers and classical computers.

.....  
.....  
.....  
.....

[4 marks]

5. (a) What is file fragmentation?

.....  
.....  
.....

[2 marks]

(b) Esther, a Basic 8 student in Cape Coast, spends long hours on her smartphone chatting, gaming and watching videos. She now sleeps late, feels tired in class, and ignores her homework. Educate Esther on three potential negative effects of using a smartphone.

.....  
.....  
.....  
.....  
.....

[6 marks]

(c) State four examples of word processing applications.

.....  
.....  
.....  
.....

[4 marks]

**END OF ESSAY TEST**

**BASIC 8**

**COMPUTING 1**

**DO NOT TURN OVER THIS PAGE  
UNTIL YOU ARE TOLD TO DO SO.**

**YOU WILL BE PENALIZED SEVERELY IF YOU ARE  
FOUND LOOKING AT THE NEXT PAGE BEFORE  
YOU ARE TOLD TO DO SO.**

Answer **all** questions in this section.

Each question is followed by **four** options lettered A to D. Find the **correct** option for **each** question and shade in **pencil** on your answer sheet the answer space which bears the same letter as the option you have chosen. Give only **one** answer to **each** question. An example is given below

Which of the following is an input device?

- A. Monitor.
- B. Projector.
- C. Speaker.
- D. Stylus.

The correct answer is 'stylus' which is lettered D and therefore answer space D **would** be shaded.

[ A ]                      [ B ]                      [ C ]                      [ ~~D~~ ]                      [ E ]

Think carefully before you shade the answer spaces: erase completely **any** answer you wish to change.

Do all rough work on this question paper. Now answer the following questions

1. In PowerPoint, the "Crop" tool is used to
  - A. make a picture bigger
  - B. remove unwanted parts of a picture
  - C. change the picture's colour
  - D. apply artistic effects
2. The MS Word's table formula, =SUM(ABOVE) means
  - A. add all numbers above the current cell
  - B. add all numbers in the current row
  - C. add all numbers in the table
  - D. add only the first cell in the column
3. Which page orientation is used for certificates and posters?
  - A. Portrait
  - B. Landscape
  - C. Horizontal View
  - D. Custom View
4. Which tab contains the formula command for calculating in tables in Word processing?
  - A. Layout
  - B. Review
  - C. Insert
  - D. Design
5. Which shape would you choose to create a speech bubble in PowerPoint?
  - A. Rectangle
  - B. Callout
  - C. Block Arrow
  - D. Oval
6. Which shortcut is used to insert a hyperlink?
  - A. Ctrl + H
  - B. Ctrl + K
  - C. Ctrl + L
  - D. Ctrl + J
7. Which output device is specifically designed for visually impaired users?
  - A. Braille Printer
  - B. Laser Printer
  - C. 3D Printer
  - D. Inkjet Printer
8. The storage device that combines the features of both traditional hard drives and SSDs is known as
  - A. USB Flash Drive
  - B. Hybrid Hard Drive
  - C. Optical Disc
  - D. Magnetic Tape
9. One of the following commands is used to select a word in a word processing document.
  - A. Double clicking
  - B. Triple clicking
  - C. Single clicking
  - D. Quadruple clicking
10. Containers for keeping programs, files and other sub-directories are referred to as
  - A. files
  - B. documents
  - C. programs
  - D. folders

11. Regular watching of phone screens or monitors can cause
- repetitive strain injury
  - stress
  - thrombosis
  - eye strain
12. The device used for converting physical paper documents into digital form is the
- braille printer
  - optical card reader
  - scanner
  - QR Code Reader
13. Which tab in MS Word Ribbon contains the portrait orientation?
- Insert
  - Home
  - Page
  - Mailings
14. A hardware device which is used to print vector graphics is known as
- printer
  - plotter
  - scanner
  - barcode reader
15. Which of the following is not considered an online service?
- Social media
  - Wikis
  - Blogs
  - Word processors
16. In a word processing application, the process of combining multiple cells into one is called
- merging
  - splitting
  - formatting
  - hyperlinking
17. The main advantage of using hyperlinks in a document is to
- increase the document's file size
  - add colour to the text
  - improve the document's print quality
  - enable quick navigation to other documents
18. Which of the following is not a characteristic of fifth-generation computers?
- Artificial intelligence
  - Parallel processing
  - Integrated circuits
  - Natural language processing
19. The main function of a wax printer is to
- print documents using melted wax instead of ink
  - create 3D models
  - produce waterproof documents
  - generate holograms
20. Which of the following storage devices is most used for long-term data storage?
- RAM
  - Cache memory
  - Magnetic tape
  - CPU registers
21. The primary advantage of quantum computing over classical computing is its
- smaller physical size
  - lower energy consumption
  - easier programming
  - ability to solve complex problems much faster
22. The term wiki in the context of online services primarily refers to
- a type of social media platform
  - a collaborative knowledge base that can be edited by users
  - a video streaming service
  - an online shopping platform
23. All the following are considered direct data entry devices except
- graphic tablet
  - optical card reader
  - braille printer
  - magnetic card reader
24. The storage media known for its use in portable computing is the
- USB flash drives
  - solid state drives
  - magnetic tape
  - optical discs
25. Which of the following technologies enhances computer accessibility for people with disabilities?
- Wireless networking
  - Quantum computing
  - Adaptive technologies
  - Cloud storage

26. Portable computing devices impact daily life through
- increased sedentary lifestyle
  - enhanced mobility and connectivity
  - limited access to information
  - reduced need for communication
27. What is the function of the Charms bar in file management?
- To increase security
  - To navigate and organize files
  - To delete files
  - To print documents
28. Which of the following correctly describes an inkjet printer?
- Sprays ink onto paper
  - Uses heat to print
  - Uses laser technology
  - Imprints images using ribbons
29. The health issue associated with improper workstation ergonomics when listening to loud sounds is
- respiratory problems
  - carpal tunnel syndrome
  - vision impairment
  - hearing loss
30. The device which can be used to read Quick Response codes is known as
- magnetic card reader
  - graphic tablet
  - QR code reader
  - optical card reader
31. The device used for identifying objects using radio waves is known as
- RFID
  - scanner
  - inkjet printer
  - digital camera
32. The purpose of merging and splitting cells in a table in MS Word is to
- change font size
  - organize data more efficiently
  - add borders to cells
  - create hyperlinks
33. Which of the following is an example of assistive technology?
- External hard drives
  - Smartwatches
  - Screen magnifiers
  - Flash drives
34. The printing device used for high-quality photo printing is the
- braille printers
  - inkjet printers
  - impact printers
  - thermal printers
35. In file management, the Drive Management primarily involves
- organizing files and folders
  - installing software
  - creating shortcuts
  - formatting storage devices
36. One role of magnetic card readers in data entry is for
- reading printed text
  - scanning barcodes
  - extracting data from magnetic strips
  - capturing handwritten input
37. To apply background colour to a table cell, one can use
- borders and shading
  - paragraph alignment
  - styles
  - font colour
38. The main advantage of using Solid State Drives (SSD) over traditional hard drives is that, they are
- large in capacity
  - durable and fast
  - cost-effective
  - compatible with older systems
39. The drawing canvas in PowerPoint is mainly used for
- typing text faster
  - grouping multiple shapes
  - making hyperlinks
  - changing themes
40. Which type of hyperlink can link to another place within the same document?
- Email link
  - Bookmark link
  - Web page link
  - File link

END OF FIRST TERM EXAMINATION

December

GHANAIAN LANGUAGE  
AND CULTURE 2 & 1  
(ASANTE TWI)

Essay and Objective

2 hours

**2 & 1**

Name: .....

Index Number: .....

ONE VISION EXAMINATIONS CENTRE (OVEC)

**END OF FIRST TERM EXAMINATION**

December

**GHANAIAN LANGUAGE & CULTURE  
TWI (ASANTE) 2 & 1**

**2 hours**

**BASIC 8**

Do **not** open this booklet until you are told to do so. While you are waiting, read and observe the following instructions carefully. Write your **name** and **index number** in **ink** in the spaces provided above.

This booklet consists of **two** parts. Answer Paper 2 which comes first in your answer booklet and Paper 1 on the Objective Test answer sheet. Paper 2 will last **1** hour **10** minutes after which answer booklet will be collected. Do **not** start Paper 1 until you are told to do so. Paper 1 will last **50** minutes.

**PAPER 2**

1 hour 10 minutes

**Essay**

This paper consists of **four** parts: **I, II, III and IV**. Answer **one** question **only** in Part I and **all** the questions in Parts II, III and IV.

Answer **all** questions in your answer booklet.

Credit will be given for clarity of expression and orderly presentation of materials.

**PART I**

COMPOSITION

[30 marks]

1. Yi dee edidi soɔ yi mu **baako** pe na fa nsemfua **aha aduonum (150)** anaa dee eboro saa twere ho asem.
  - a. Twere sɛdeɛ wɔdi afahye titire bi wɔ wo mantam mu.
  - b. Twere abasɛm a ekɔwiee sɛ, " adamfoɔ nti na kɔtɔ anya tire"
  - c. Worebɛkɔ wo nua abadintɔ wɔ wo kurom. Twere krataa kɔma wo kyerekyerɛni na sɛ ne ho kwan.
  - d. Abɛ ne kookoo dee ɛwɔ he na ɛho wɔ mfasɔɔ bebreɛ. Kyere w'adwene.

**PART II**

COMPREHENSION

[10 marks]

2. Kenkan dee edidi soɔ yi na bua nsemmissa no **nyinaa**.

Ohene bi tenaa ase wɔ Nyamebɛkyere kuro bi mu a na wɔfrɛ no Nana Danso Na ɔye ohene pa. Na ne tirimnye den koraa. Yei maa no tenaa akonnwa no so kyereɛɛ.

Da koro bi, aberanteɛ bi kɔɔ Nyamebɛkyere kuro no mu a na wɔfrɛ no Okyere. Na ɔno nso ye nipa pa. ɔye obi nso a na ɔpe adwumayɔ nti ɔnyaa sika yie. Sɛ ohunu sɛ ahia obi a, na ɔtumi ma no sika. Saa papayɔ yi maa Okyere tenaa kuro no mu asomdwoeɛ mu. Akyire yi, ne din hyetaa Nyamebɛkyere kuro ne nkuro a atwa ho ahyia nyinaa so. Ɛyɛɛ saa maa Nyamebɛkyere hene yii no sɛ ne mpanimfoɔ no mu baako. Yei yɛɛ ohene no ba bi a na wɔfrɛ no Owusu ya.

Da bi, na Owusu te ho redwennwene se, "Me a meye ohene ba panin wo Nyamebekyere ha koraa mpo, menni animuonyam te se Okyere. Mewe na mafa kwan bi de no afa so". Owusu kaa saa ara pe na ofiri ho koo Okyere fie. Oduruu ho pe na owoo no sekan. Okyere teateaam maa mmerante bi a na wooo mfikyire baabi koo ho. Woduruu ho no, wanhunu obiara wo fie ho. Dee wahunuie ara ne se Okyere awu da mogya mu. Akyire yi, asem no hyee Owusu so ma o ka kyeree nkurfoe se ono na okumm Okyere. Efiri saa bere no, nnipa a wotee saa asenkese yi ani annye Owusu ho bio, nanso wantumi anka efiri se na oye ohene ba.

Ebeye afe akyi perepere na ohene no kaa nkyene gue. Ebaa saa no, wode Owusu dii adee. N'ahennie mu no, oman no mu annwo da efiri se na obiara mpe n'asem. Se ohye mmara a, ne manfoe nni so. Afei, ofitii ase se o de ohye ne ahunahuna bedi oman no so. Omanfoe hunuu saa no, woyee won adwene se wobetu no adee so. Omanfoe fitii ase ne ohene no akodom koe. Wokoe, koe, koe ansa na woredi ohene no akodom no so nkunim. Ohene no tee se n'akodom no adi nkoguo no, ope se anka obedwane afiri kuro no mu nanso omanfoe no ampene. Wokyeree no too afiase. Womaa otee ne ho ase se, ohene de ntoboase na edi ne manfoe so na omfa ohye.

Omanfoe no dwenee asem no ho no, wofaa Okyere ba bi a na wofre no Ankama sii won so hene. Ankama dii adee wo oman no mu no, oman no mu dwoe. Afei, nkoso pii baa oman no mu. Emaa asomdwoe baa kuro no mu. Ankama nso nyaa din te se ne papa Okyere perepere.

- a. Kuro ben mu asem na wakenkan yi?
- b. Bo ohene a owo kuro no so din?
- c. Twer ne ba no din.
- d. Nsonsoe ben na da ohene no ne ne ba no ntam?
- e. Okyere ye hwan?
- f. Edeen nti na ohene ba no kumm Okyere?
- g. Okwan ben na Owusu faa so kumm Okyere?
- h. "Kaa nkyene gue", kyere sen wo abasem yi mu?
- i. Eye den na wotuu ohene foforo no adee so?
- j. Edin ben na wode bema abasem yi?

**PART III**  
TRANSLATION  
[10 marks]

3. *Kyerε deε edidi soɔ yi ase kɔ Asante Twi mu.*
- (a) The judge judges criminals at the court.
  - (b) You are welcome to the meeting.
  - (c) The footballers have started their game.
  - (d) The fear of the Lord is the beginning of wisdom.
  - (e) Why is the president not present?
  - (f) Amplify your voice please.
  - (g) Stand firm!
  - (h) Resist the devil and he will flee.
  - (i) I am about to call out your names.
  - (j) They believe he was telling the truth.

**PART IV**  
LANGUAGE AND USAGE  
[10 marks]

4. *Yiyi nsem̄misa a εwɔ ɔfa ha nyinaa ano.*  
*Nsem̄misa (a) - (d) mu no, kyere nsem̄fua a wɔasensane aseε no sε eyε **din a yεtumi** kan anaa **yentumi nkan**.*
- (a) Gyata no nenam abɔnten hɔ.
  - (b) Anwea wɔ akonnwa no so.
  - (c) Dadewa awɔ me nan mu.
  - (d) εwɔ sε yenya ɔdɔ ma nnipa.

*Nsem̄misa (e) - (g) mu no, twere **edinnsiananmu** a εfata hye nsem̄fua a wɔasensane ase no anan mu.*

- (e) Akwasi ne me rekɔ asɔre.
- (f) Fa nkyene no ma me.
- (g) Ofosu wɔ sika bebree wɔ sikakorabea.

*Nsem̄misa (h) - (j) mu no, kyere **edin nkyerεknyerεmu** a εwɔ ɔkasamu yi mu.*

- (h) Abɔfoɔ taa hye ntadeε fitaa.
- (i) ɔkraman gyimifoɔ repɔ dodo.
- (j) Meda mpa mmienu so.

**END OF ESSAY TEST**

# DO NOT TURN OVER THIS PAGE UNTIL YOU ARE TOLD TO DO SO.

**YOU WILL BE PENALIZED SEVERELY IF YOU ARE  
FOUND LOOKING AT THE NEXT PAGE BEFORE  
YOU ARE TOLD TO DO SO.**

## BASIC 8

PAPER 1

50 minutes

### OBJECTIVE TEST

Answer all questions on your Objective Test answer sheet.

1. Use **2B** pencil throughout.
2. On the pre-printed answer sheet, check that the following details are **correctly** printed: Your **surname** followed by **other names**, the *Subject Name*, your *Index Number*, *Centre Number* and the *Paper Code*.
3. In the boxes marked *Candidate Number*, *Centre Number* and *Paper Code*, **reshade** each of the shaded spaces.
4. An example is given below. This is for a female candidate whose name is Janet OWUSU, Her *Index Number* is **772384188** and she is writing the examination at Centre Number **77234**. She is offering **Ghanaian Language Twi (Asante) 1** and the Paper Code is **0131**.

ONE VISION EXAMINATIONS CENTRE (OVEC)  
BASIC EDUCATION TERMINAL EDUCATION  
**OBJECTIVE ANSWER SHEET**

<b>CANDIDATE NAME:</b> OWUSU JANET	<b>SUBJECT NAME:</b> GH. LANG. TWI (ASANTE) 1
---------------------------------------	--

- |  |  |
|--|--|
| <ol style="list-style-type: none"> <li>1. Use 2B pencil. Press firmly.</li> <li>2. Answer question by choosing one letter and then, shade through the letter chosen like this<br/>[A] [B] [C] [D] [E]</li> <li>3. If you want to change an answer, rub out your</li> </ol> | <ol style="list-style-type: none"> <li>first mark completely.</li> <li>4. If only four alternatives answers are given for each question, ignore the letter E</li> <li>5. Your question paper may have fewer than 100 questions.</li> </ol> |
|--|--|

CANDIDATE NUMBER									
7	7	2	3	8	4	1	8	8	
[0]	[0]	[0]	[0]	[0]	[0]	[0]	[0]	[0]	[0]
[1]	[1]	[1]	[1]	[1]	[1]	[1]	[1]	[1]	[1]
[2]	[2]	[2]	[2]	[2]	[2]	[2]	[2]	[2]	[2]
[3]	[3]	[3]	[3]	[3]	[3]	[3]	[3]	[3]	[3]
[4]	[4]	[4]	[4]	[4]	[4]	[4]	[4]	[4]	[4]
[5]	[5]	[5]	[5]	[5]	[5]	[5]	[5]	[5]	[5]
[6]	[6]	[6]	[6]	[6]	[6]	[6]	[6]	[6]	[6]
[7]	[7]	[7]	[7]	[7]	[7]	[7]	[7]	[7]	[7]
[8]	[8]	[8]	[8]	[8]	[8]	[8]	[8]	[8]	[8]
[9]	[9]	[9]	[9]	[9]	[9]	[9]	[9]	[9]	[9]

CENTRE NUMBER				
7	7	2	3	4
[0]	[0]	[0]	[0]	[0]
[1]	[1]	[1]	[1]	[1]
[2]	[2]	[2]	[2]	[2]
[3]	[3]	[3]	[3]	[3]
[4]	[4]	[4]	[4]	[4]
[5]	[5]	[5]	[5]	[5]
[6]	[6]	[6]	[6]	[6]
[7]	[7]	[7]	[7]	[7]
[8]	[8]	[8]	[8]	[8]
[9]	[9]	[9]	[9]	[9]

PAPER CODE			
0	1	3	1
[0]	[0]	[0]	[0]
[1]	[1]	[1]	[1]
[2]	[2]	[2]	[2]
[3]	[3]	[3]	[3]
[4]	[4]	[4]	[4]
[5]	[5]	[5]	[5]
[6]	[6]	[6]	[6]
[7]	[7]	[7]	[7]
[8]	[8]	[8]	[8]
[9]	[9]	[9]	[9]

For Supervisors only.

If candidate is absent shade this space.



Answer **all** the questions.

Saa sɔhwɛ yi mu nso, worentwerɛ mmuaɛɛ no mu biara. Wode pensere bekeka adaka anaa faako a ɛsɛ sɛ wode mmuaɛɛ no hyɛ wɔ mmuaɛɛ adaka no mu.

Wɔahyehyɛ mmuaɛɛ adaka no, A, B, C, D, E. Sɛ worebeɔwɔ a sɛmmisa bi a, hwehwɛ mmuaɛɛ a ɛfata no ansa na woakeka n'afa no mu wɔ adaka no mu. Wɔayɛ bi de ayɛ nhwɛsɔ akyerɛ wo sɛnea ɛsɛ sɛ woyɛ no fa.

Okasa a ɛdidi sɔɔ yi mu, wɔasan a sɛmfua baako bi ase. Afei wɔde n sɛmfua nan bi ahyehyɛ a sɛɛ hɔ. Kyerɛ emu **baako** a ɛne nea wɔasan a sɛɛ no **bɔ abira**.

Wiase ha ohiani a sɛm yɛ mmɔbɔ.

- A. ɔdeyɛfoɔ
- B. onimdefoɔ
- C. ahooɔdenfoɔ
- D. ɔdefoɔ

Sɛ wohwɛ a, wobehu sɛ ɔdefoɔ ne a sɛmfua a ɛne ohiani bɔ abira. Enti woakeka D no mu wɔ mmuaɛɛ adaka no mu.

[ A ]                      [ B ]                      [ C ]                      [ D ]

Afei kɔ so yɛ nea ɛdidi sɔɔ yi saa ara kɔsi sɛ wobɛɔwɔ n sɛmmisa no **nyinaa** awie.

1. Bragorɔ amanneɛ no nyinaa di
  - A. adaduanan
  - B. afe
  - C. nnawɔtwe
  - D. adaduonu
2. Ananse ba baako wɔ anansesɛm mu ne
  - A. Afudohwedohwe
  - B. Akokɔbedɛɛ
  - C. Agya Koo
  - D. Afafantɔ
3. Wɔ awɔɔ nnidisɔɔ mu no, Badu akviriba ne
  - A. Duku
  - B. Adusa
  - C. Awɔtwe
  - D. Nsia
4. Asukuufɔɔ ..... kɔ sukuu wɔ "Bethel Mission".
  - A. biara
  - B. mo
  - C. yeinom
  - D. ɛnonom
5. Sɛ wɔregoro bra na duawa tua brani no ano a, ɛkyerɛ sɛ
  - A. ɔntumi nkasa
  - B. obi asi no asiwa
  - C. n'ano asi
  - D. wayɛ bragorɔ awie
6. ɛbɛ gu ahodɔɔ dodoɔ sɛn?
  - A. Nson
  - B. Nsia
  - C. ɛnan
  - D. Enum
7. Nneɛma a wɔde ka brani no ano no mu baako ne
  - A. bayerɛ
  - B. nsafufuo
  - C. kosua
  - D. asikyire
8. ɛda a yɛde woo Akua yɛ
  - A. Efiada
  - B. Wukuada
  - C. ɛbenada
  - D. Kwasiada
9. Osei de ne nsa abɔ ..... so
  - A. me ani
  - B. m'ani
  - C. mani
  - D. meani
10. Tete no, sɛ ɔbarima bi duru ne mpanin mfeɛ so a, wɔma no
  - A. sekan ne kɛntɛn
  - B. asɔ ne sɔneɛɛ
  - C. etuo ne sekan
  - D. etuo ne kɛntɛn
11. Wɔ Akanman mu no, nnipakuo yi mu baako na ɔgoro bra?
  - A. Gyaasehene
  - B. Sanaahene
  - C. ɔkyeame
  - D. ɔhemmaa

12. Nsem a yede firi anansesem ase no bi ne  
 A. Abraa, abraa o!  
 B. Nana so wo bodua mu  
 C. Gyaе o!  
 D. Dedeede o!
13. Yeye kyiribra amammerе ma abaayewa a, .....  
 A. wanya sika bebreе  
 B. wanyinsen bre a wongoroo no bra  
 C. watu kwan  
 D. areko sukuu mu foforo
14. "Mmerе dane a, dane wo ho bi", yei ye ebe ben?  
 A. Nnye-so-be  
 B. Ayan-so-be  
 C. Asem-se-be  
 D. Ebe turodoo
15. Mpanimfoо yi mu hwan na kyiribra amannee hye ne nsa?  
 A. Abusuapanin  
 B. Ohemmaa  
 C. Nsumankwahene  
 D. Abrafoо
16. Nimo antumi wo a, .....  
 A. etete wo ntoma  
 B. esi wo ntoma  
 C. eto wo ntoma  
 D. ehata wo ntoma
17. Amammerе a Akanfoо nam so bo abaayewa a waduru ne mpanin mfee so dwetire ne  
 A. bragoro  
 B. kyiribra  
 C. ayiyo  
 D. awaregyaе
18. Nkwankyen borodee se: " ....."  
 A. Menya sibeа a anka meso abiribra  
 B. Adeе ansa a anka mammeе  
 C. Me suman ne m'ani  
 D. Nwaewaeho amma manye yie
19. Wo bragoro mu no, shefa na obrani no kotena?  
 A. Abusua fie  
 B. Sukuudan mu  
 C. Ohemmaa fie  
 D. Komfoо fie
20. Nsuo a edo wo na eko  
 A. w'ahina mu  
 B. w'atere so  
 C. wo kwansen mu  
 D. wo prete so
21. Hwan na wodi kan kobo no amannee se worebегoro abaayewa bi bra?  
 A. Kurontihene  
 B. Ohene  
 C. Okra  
 D. Ohemmaa
22. Wodua daakye a, .....  
 A. efifiri ohia  
 B. efifiri ahohia  
 C. efifiri ahotо  
 D. efifiri ahoyera
23. Nneema yi mu dee ewo he na ense se osakyima no de ne se ka mu?  
 A. Mako  
 B. Gyeene  
 C. Nkosua  
 D. Nkyene
24. Watoto w'ani awe kyere se, .....  
 A. aredidi  
 B. omfere adee  
 C. watu kwan  
 D. n'ani abere
25. Akanfoо amammerе mu no, kyiribra ye  
 A. animuonyam  
 B. ahurusie  
 C. mmusuo  
 D. awaregyeе
26. Yenyi otwe nyi adowa kyere se,  
 A. obiara nka ho  
 B. obiara ankasa  
 C. obiara ka ho  
 D. obiara antie
27. Deen na wode sen kyiribrani no kon mu?  
 A. Dwantire ne kwansen  
 B. Dwantire ne nkosua  
 C. Kwansen ne kwantere  
 D. Sapo ne ahaban

28. Oman nsa nifa apan kyere se, .....
- oko asi kuro no mu
  - ehene reyi ne nsa
  - ehene awu
  - anigye abakuro no mu
29. Dee edidi so yi nyinaa ye nneema a Nsumankwahene gye firi kyiribrani no awofoo ho gye se
- akokoba
  - asesedwa
  - nkosua
  - sonwede
30. Owura Agyeman aburoo aforo apata. Yei kyere se
- Owura Agyeman pata wo aburoo
  - Owura Agyeman sikasem aye yie
  - Owura Agyeman sikasem ho aye den
  - Owura Agyeman aburoo sisi apata so
31. Nnipa a obetumi akosra kyiribrani no wo nwiram ho ye
- ehemma
  - ehene
  - ne maame
  - nsumankwahene
32. Yi dee enye kasakoa ho mfasoo.
- Eboa ma yedwene ko akyiri ansa na yekasa
  - Eboa ma atennidie koso waawaa
  - Eba anyansafo adi
  - Ekyere anote
33. Eber e ben na osakyima no maame bo dawuro?
- Anopatutuutu
  - Dasuom
  - Awia
  - Anwumme
34. Bragoro ho mfasoo ne se, .....
- ede ntawantawa ba
  - ebaa osakyima no nya kunu pa
  - eda aniber e adi
  - emma osakyima no nware
35. Ntaafoo akyiriba ne
- Tawia
  - Nyankomago
  - Damugyan
  - Atuakosen

**Kenkan anwensem yi na fa bua nsemmisa 36-40**

Ani tua se,

Eno ne agya de won ani akyer e ban.

Agya w'agyanka mmaboro,

Wofa nni mu, obusuani nni mu,

Obarima na onom adunwono

Enti, mia w'ani

Dodoo no ara ani tua se,

Wosi a, na apen wo,

Wotu nso a, na awam wo.

Obre kantankrankyi konkon wo so.

W'anim asi, w'akyi atua.

Nanso, mia w'ani.

36. Nkra a anwensem yi de reto dwa ye

- anigyesem
- nkuranhyensem
- ahurusinsem
- akutiansem

37. Anwensem yi kura afaafa

- du-mmieniu
- nson
- mmiensa
- mmieniu

38. Nsensanee dodoo sen na ewo anwensem yi mu?

- Nsia
- Du-baako
- Du-mmieniu
- Mmieniu

39. "Obarima na onom adunwono" ye kasasu ben?

- Ebe
- Kasakoa
- Anihanehane
- Se-nipa

40. Wo anwensem no mu no, agyanka ye obi a, .....

- ne wofa ne sewaa afiri mu
- ne na ne n'agya afiri mu
- n'abusuapanin afiri mu
- ne nuanom afiri mu

**END OF PAPER**

**END OF FIRST TERM EXAMINATION**

December

**FRENCH  
LANGUAGE 2 & 1**

Essay and Objective

1 hour 45 minutes

**2 & 1**

Name: .....

Index Number: .....

Signature: .....

Date of Examination: .....

**ONE VISION EXAMINATIONS CENTRE (OVEC)**

**END OF FIRST TERM EXAMINATION**

December

**FRENCH LANGUAGE 2 & 1**

**1 hour 45 minutes**

Essay and Objective

**BASIC 8**

Do **not** open this booklet until you are told to do so. While you are waiting, read and observe the following instructions carefully. Write your **name, index number, signature** and **date of examination** in ink in the spaces provided above.

This booklet consists of **two** parts, **Paper 2** and **Paper 1**. Answer Paper 2 which comes first in your answer booklet and Paper 1 on the Objective Test answer sheet. Paper 2 will last **45** minutes after which answer booklet will be collected. Do **not** start Paper 1 until you are told to do so. Paper 1 will last **1** hour.

**PAPER 2**

[60 marks]

45 minutes

*Il y a **deux** questions dans cette partie. Répondez à **toutes** les questions.*

*There are **two** questions in this part. Answer **all** questions.*

1. Lisez les phrases suivantes et complétez-les avec les bonnes réponses. **[20 marks]**

(a) Les élèves gardent leurs cahiers dans .....

(b) Les joueurs portent .....

(c) Kofi est court mais sa sœur est .....

(d) On prend le petit déjeuner .....

(e) Il y a combien de mois dans une année? .....

(f) Pour acheter quelque chose, il faut de .....

(g) Les apprenants étudient dans .....

(h) Je travaille de lundi à vendredi sauf .....

(i) Les touristes vont .....

(j) Le Japon est .....



OVERC  
SAMPLE

FRENCH 1 [BASIC 8]

**DO NOT START PAPER ONE  
UNTIL YOU ARE TOLD TO DO SO.**

**YOU WILL BE PENALIZED SEVERELY IF YOU ARE  
FOUND STARTING THE OBJECTIVE TEST BEFORE  
YOU ARE TOLD TO DO SO.**

Answer **all** questions in this section.

Each question is followed by **four** options lettered A to D. Find the **correct** option for **each** question and shade in **pencil** on your answer sheet the answer space which bears the same letter as the option you have chosen. Give only **one** answer to **each** question. An example is given below

From the list of word lettered **A** to **D**, choose the one that **correctly** complete the sentence.

Example: **Ali:** Ou vas tu?

**Ama:** Je vais à Kumasi. Alors, je vais à la gare routière.

**Question:** Ama va prendre ..... pour aller à Kumasi.

- A. l'avion
- B. le bateau
- C. le bus
- D. le train

The correct answer is 'le bus' which is lettered **C** and therefore answer space **C** would be shaded.

[ A ]                      [ B ]                      [ ~~C~~ ]                      [ D ]

Be sure you understand the instructions at the beginning of **each part** before you try to answer the questions that follow them. Do **not** spend too much time on a question. If you find a question difficult, leave it and go on and try it again later.

Use **pencil** throughout. If you wish to change an answer, **erase** your first answer completely and shade the appropriate space for the new answer.

Now answer the following questions

## PART 1

### TEXTE DE COMPRÉHENSION

Vous allez lire quatre documents différents. Pour chaque document, vous répondrez aux questions en noircissant la lettre de la réponse juste sur la feuille de réponse.

#### Texte 1 : Chez le boucher

- Nadia : Bonjour, Monsieur. Vous avez de la viande fraîche?
- Le boucher : Oui, Madame! Combien de kilos voulez-vous, Madame?
- Nadia : Donnez-moi cinq kilos de bœuf, sans os et six kilos avec os.
- Le boucher : C'est tout, Madame?
- Nadia : Euh..., ce n'est pas assez. J'en veux deux kilos de plus. Si vous avez de la fois, donnez-moi deux kilos aussi.
- Le boucher : Deux kilos de fois. Voilà! Tenez. Ça suffit?
- Nadia : Oui, merci.
- Le boucher : Vous ne voulez pas un peu de graisse, Madame?
- Nadia : Non, merci. Ce n'est pas bon pour la santé.

1. Quel travail fait le boucher?
  - A. Il vend de la viande
  - B. Il vend des poissons
  - C. Il mange la viande
  - D. Il prend soin des bœufs
2. Où travaille le boucher?
  - A. En brousse
  - B. Dans la forêt
  - C. Au champ
  - D. À la boucherie
3. Nadia est un/une ....., elle vient acheter.
  - A. client
  - B. cliente
  - C. vendeuse
  - D. vendre
4. C'est quel type d'animal, le boucher égorge?
  - A. L'éléphant
  - B. Le cheval
  - C. La chèvre
  - D. La vache

5. Pourquoi Nadia n'a pas acheté de graisse?
- A. La graisse est bonne pour la santé
  - B. La graisse est mauvaise pour notre corps
  - C. La graisse est pour le boucher
  - D. La graisse est jolie

**Texte 2 :**

Garçon : Madame, Monsieur. Qu'est-ce que prenez, s'il vous plaît?  
Monsieur : Du thé, pour moi.  
Garçon : Un thé au lait ou un thé nature?  
Monsieur : Un thé au lait avec une omelette à la crème. Même chose pour ma femme.  
Madame : Pas du tout! Pour moi, une tasse de lait bien chaud, avec des œufs cuits.  
Garçon : Dédolé, Madame! On ne sert pas le lait tout seul ici.  
Madame : Alors, donnez-moi un jus de fruits, avec deux petits pains aux raisins secs.

6. Quelle est la nature du texte? C'est
- A. un dialogue
  - B. une conversation
  - C. un poème
  - D. un son
7. Il y a combien de personnages dans le texte?
- A. 1
  - B. 2
  - C. 3
  - D. 4
8. Le monsieur est ..... de la madame, selon le texte.
- A. l'ami
  - B. la femme
  - C. le mari
  - D. la cousine
9. Une omelette est faite .....
- A. des œufs
  - B. des fruits
  - C. du beurre
  - D. du sucre
10. Parmi les trois personnes, qui prend du jus?
- A. La dame
  - B. Le monsieur
  - C. Le garçon
  - D. Eux tous

**Texte 3 : Le Ghana**

Le nom « Ghana » vient d'un ancien empire situé en haute Guinée. Le Ghana actuel est devenu indépendant le 6 mars, 1957. Kwame Nkrumah, le premier président, luttait pour l'indépendance de toute l'Afrique. Malheureusement, il a été renversé en 1966. Il s'en est suivi un régime militaire dirigé par le Lieutenant général Kotoka puis un gouvernement civil a pris la relève jusqu'en 1972.

11. On avait un empire qui s'appelait le
- A. Togo
  - B. Ghana
  - C. Guinée
  - D. Afrique
12. L'actuel Ghana a eu son .....le 6 mars, 1957.
- A. indépendant
  - B. indépendance
  - C. nom
  - D. prénom

13. Comment appelle-t-on le premier président du Ghana?

- A. JJ Lawrence
- B. Kotoka
- C. Kwame Nkrumah
- D. John Agyekum Kuffour

14. Quand il a eu un coup d'état au Ghana, selon le passage?

- A. 1957
- B. 1966
- C. 1972
- D. 2000

15. Le Lieutenant général Kotoka était

- A. un policier
- B. un douanier
- C. un commissaire
- D. un soldat

**Texte 4** : L'effet du téléphone mobile.

Deux groupes de chercheurs américains venaient de publier une étude sur l'impact du téléphone mobile sur le cerveau. Les tests, menés sur 47 adultes démontraient pour la première fois que les radiations d'un téléphone augmentaient l'activité de la partie du cerveau près de l'antenne du téléphone. Les scientifiques précisaient cependant que rien ne leur permettait de dire que les radiations provoquaient des dommages.

16. À quoi sert le téléphone mobile?

- A. Pour faire des appels
- B. Pour danser la musique
- C. Pour jouer les jeux
- D. Pour écrire

17. Les deux groupes ont publié une étude sur .....

- A. l'effet négatif du téléphone mobile
- B. l'effet positif du téléphone
- C. l'impact positif du téléphone
- D. la santé

18. Sur quelle partie du corps le téléphone nous affecte?

- A. le nerf
- B. le veine
- C. le cheveu
- D. le cerveau

19. Combien de personnes les scientifiques ont pris pour faire le test?

- A. 37
- B. 27
- C. 57
- D. 47

20. Selon le passage, qu'est-ce qui détruit le cerveau?

- A. Les radiations
- B. Les appareils
- C. La fumée
- D. Le feu

## PART II

Complétez les phrases suivantes avec **les mots qui conviennent** en noircissant la lettre de la réponse juste.

21. .... crayon est sur la table.

- A. Un
- B. Une
- C. Du
- D. Des

22. Tu manges ..... riz? Oui, papa.

- A. de
- B. d'
- C. de l'
- D. du

23. Mon grand-père ne vit plus. Il est

.....

- A. mort
- B. joli
- C. grand
- D. vivant

24. J'aime Ama parce que/qu' ..... est gentille.  
 A. il  
 B. elles  
 C. ils  
 D. elle
25. Le professeur habite ..... Wenchi.  
 A. a  
 B. en  
 C. au  
 D. à
26. Je suis ..... retard, c'est pourquoi je cours.  
 A. y  
 B. de la  
 C. en  
 D. pas
27. Tu ..... malade? Non, pourquoi?  
 A. as  
 B. est  
 C. suis  
 D. es
28. Kofi ..... aime pas le bruit. Il dort.  
 A. ne  
 B. n'  
 C. ni  
 D. non
29. .... ta mère est fatiguée, il faut la dire de s'asseoir.  
 A. S'  
 B. Si  
 C. Son  
 D. Sa
30. .... avion est vieux. Il n'est plus utilisé.  
 A. Cette  
 B. Ces  
 C. Ce  
 D. Cet

### PART III

Complétez le passage suivant avec **les mots qui conviennent le plus** en noircissant la lettre de la réponse juste.

#### La famille de Franc

Franc vient **-31-** Ejisu. Son père est **-32-** Il travaille à la clinique Divine Grace. Il s'appelle Pierre. Sa **-33-** est agent de poste. Elle travaille à la poste. Le grand-frère répare les voitures; il est **-34-** et sa **sœur** est enseignante. Son neveu conduit la voiture du ministre **-35-** éducation.

Emmanuel, son cousin, **-36-** vétérinaire. **-37-** aime les animaux. Quand ils tombent malades, il **-38-** soigne. Rita, la petite sœur de Franc, s'occupe des programmes des enfants **-39-** la télévision. **-40-** les membres de la famille de Franc ont un emploi. Ils aident Franc à poursuivre ses études.

- |     | <b>A</b>  | <b>B</b>   | <b>C</b>   | <b>D</b> |
|-----|-----------|------------|------------|----------|
| 31. | de        | du         | d'         | des      |
| 32. | joueur    | tuteur     | médecin    | manager  |
| 33. | cousin    | neveu      | ami        | mère     |
| 34. | chauffeur | conducteur | mécanicien | plombier |
| 35. | de la     | de l'      | l'         | d'       |
| 36. | es        | est        | suis       | sont     |
| 37. | elle      | il         | tu         | vous     |
| 38. | les       | le         | la         | l'       |
| 39. | a         | et         | à          | pour     |
| 40. | tout      | toutes     | tous       | toute    |

**END OF PAPER**